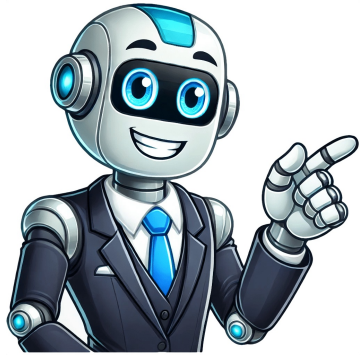


I'm not a bot



Homebrew Guide Note If something goes wrong or you need help, check troubleshooting. Atmosphere is currently the CFW with the largest feature set. It enables game modding, homebrew, backup installs, and more. To launch Atmosphere: Enter Hekate through RCM or with PegaScape. Tap 'Launch > CFW' Hekate will now boot Atmosphere. Hekate itself supports chainloading other fusee-payloads so you can, for example, launch ReiNX from Hekate. This is useful for modchips or dongles when you can only configure one payload. Put any payloads you wish to chainload into the '/bootloader/payloads' folder on your SD card. Enter Hekate through RCM or PegaScape Select 'Payloads' Select your payload of choice By configuring Auto-Boot, each time you run Hekate, instead of seeing the menu, you will be greeted with a splash screen and immediately launch into the configuration of your choice. 1. Enter Hekate through RCM or PegaScape. 3. Select 'Options > Auto boot' 4. Select your launch configuration of choice If you need to get back into the menu with autoboot enabled, hold VOL- immediately when the bootlogo appears when entering Hekate. This section is only intended to be used on consoles with a vulnerable RCM. Enabling AutoRCM on an IPATCHED Switch will literally BRICK your Switch. If you cannot run payloads from RCM with fusee-gelee, DO NOT ENABLE AUTORCM. Failure to heed this warning will result in a bricked Switch. AutoRCM is an optional software method of forcing your Switch to go into RCM on every launch, without the need of a jig or hardmod. Essentially, you are purposefully bricking your Switch in a controlled matter that forces it to launch into recovery. This might sound scary but is not actually dangerous, and can be undone at any time. By doing this, you will need to use a payload sender to boot your Switch after every restart/shutdown. Enter RCM on your Switch Push the Hekate payload to your Switch while holding Vol- to skip autoboot and enter the menu Select 'Tools > Archive Bit - AutoRCM > Enable AutoRCM' You can disable AutoRCM by entering the same menu above and selecting 'Disable AutoRCM'. From now on, to boot into stock firmware, select 'Launch > Stock' in Hekate. Warning Shutting down the Switch from custom firmwares other than Atmosphere after booting with AutoRCM will not turn off the Switch! You must choose 'Power Off' from Hekate to properly shutdown the Switch. Not doing so will leave your Switch in RCM, slowing draining battery. By backing up your NAND (the Switch's internal memory), you will later be able to restore it in the event that anything goes wrong, essentially rewinding it back to a previous state. BIS keys are also good to backup so you can reinstall any firmware version manually should your NAND backup become corrupted or lost. Enter Hekate through RCM or PegaScape. In Hekate, select 'Tools > Backup eMMC > eMMC BOOT0 & BOOT1' When finished, remove your SD card (you don't need to shutdown Hekate), insert it into your PC, and copy the 'backup' folder to a safe location on your PC. Afterwards, delete the 'backup' folder on your SD card. Insert your SD card back into your Switch In Hekate, select 'eMMC RAW GPP' If your SD card has less than ~32GB free space, Hekate will provide additional instructions every few minutes about pulling files off of your SD card so it can continue. If you weren't required to copy files during the backup process, once again copy the 'backup' folder off of your SD card and put it in a safe location on your PC. Delete the 'backup' folder on your SD card. Close the Backup menu, go back to the Home tab and tap 'Reboot > RCM' Send the 'Lockpick_RCM.bin" payload provided in the SDSetup download to your Switch (if you do not have this payload, you can obtain it from GitHub. Press the power button to shutdown once finished. Insert your SD card into your PC. Copy the /switch/prod.keys file to a safe location. Warning It is highly recommended that you store these backups and keys in multiple locations (ex. cloud storage, external harddrive, etc) as they may be critical to restoring your Switch if anything goes wrong in the future. © Copyright 2019-2020, noahc3 and friends Built with Sphinx using a theme provided by Read the Docs. You can't perform that action at this time. Skip to main content Reddit and its partners use cookies and similar technologies to provide you with a better experience. By accepting all cookies, you agree to our use of cookies to deliver and maintain our services and site, improve the quality of Reddit, personalize Reddit content and advertising, and measure the effectiveness of advertising. By rejecting non-essential cookies, Reddit may still use certain cookies to ensure the proper functionality of our platform. For more information, please see our Cookie Notice and our Privacy Policy. Skip to main content Reddit and its partners use cookies and similar technologies to provide you with a better experience. By accepting all cookies, you agree to our use of cookies to deliver and maintain our services and site, improve the quality of Reddit, personalize Reddit content and advertising, and measure the effectiveness of advertising. By rejecting non-essential cookies, Reddit may still use certain cookies to ensure the proper functionality of our platform. For more information, please see our Cookie Notice and our Privacy Policy. Homebrew Guide Note If something goes wrong or you need help, check troubleshooting. Atmosphere is currently the CFW with the largest feature set. It enables game modding, homebrew, backup installs, and more. To launch Atmosphere: Enter Hekate through RCM or with PegaScape. Tap 'Launch > CFW' Hekate will now boot Atmosphere. Hekate itself supports chainloading other fusee-payloads so you can, for example, launch ReiNX from Hekate. This is useful for modchips or dongles when you can only configure one payload. Put any payloads you wish to chainload into the '/bootloader/payloads' folder on your SD card. Enter Hekate through RCM or PegaScape Select 'Payloads' Select your payload of choice By configuring Auto-Boot, each time you run Hekate, instead of seeing the menu, you will be greeted with a splash screen and immediately launch into the configuration of your choice. 1. Enter Hekate through RCM or PegaScape. 3. Select 'Options > Auto boot' 4. Select your launch configuration of choice If you need to get back into the menu with autoboot enabled, hold VOL- immediately when the bootlogo appears when entering Hekate. This section is only intended to be used on consoles with a vulnerable RCM. Enabling AutoRCM on an IPATCHED Switch will literally BRICK your Switch. If you cannot run payloads from RCM with fusee-gelee, DO NOT ENABLE AUTORCM. Failure to heed this warning will result in a bricked Switch. AutoRCM is an optional software method of forcing your Switch to go into RCM on every launch, without the need of a jig or hardmod. Essentially, you are purposefully bricking your Switch in a controlled matter that forces it to launch into recovery. This might sound scary but is not actually dangerous, and can be undone at any time. By doing this, you will need to use a payload sender to boot your Switch after every restart/shutdown. Enter RCM on your Switch Push the Hekate payload to your Switch while holding Vol- to skip autoboot and enter the menu Select 'Tools > Archive Bit - AutoRCM > Enable AutoRCM' You can disable AutoRCM by entering the same menu above and selecting 'Disable AutoRCM'. From now on, to boot into stock firmware, select 'Launch > Stock' in Hekate. Warning Shutting down the Switch from custom firmwares other than Atmosphere after booting with AutoRCM will not turn off the Switch! You must choose 'Power Off' from Hekate to properly shutdown the Switch. Not doing so will leave your Switch in RCM, slowing draining battery. By backing up your NAND (the Switch's internal memory), you will later be able to restore it in the event that anything goes wrong, essentially rewinding it back to a previous state. BIS keys are also good to backup so you can reinstall any firmware version manually should your NAND backup become corrupted or lost. Enter Hekate through RCM or PegaScape. In Hekate, select 'Tools > Backup eMMC > eMMC BOOT0 & BOOT1' When finished, remove your SD card (you don't need to shutdown Hekate), insert it into your PC, and copy the 'backup' folder to a safe location on your PC. Afterwards, delete the 'backup' folder on your SD card. Insert your SD card back into your Switch In Hekate, select 'eMMC RAW GPP' If your SD card has less than ~32GB free space, Hekate will provide additional instructions every few minutes about pulling files off of your SD card so it can continue. If you weren't required to copy files during the backup process, once again copy the 'backup' folder off of your SD card and put it in a safe location on your PC. Delete the 'backup' folder on your SD card. Close the Backup menu, go back to the Home tab and tap 'Reboot > RCM' Send the "Lockpick_RCM.bin" payload provided in the SDSetup download to your Switch (if you do not have this payload, you can obtain it from GitHub. Press the power button to shutdown once finished. Insert your SD card into your PC. Copy the /switch/prod.keys file to a safe location. Warning It is highly recommended that you store these backups and keys in multiple locations (ex. cloud storage, external harddrive, etc) as they may be critical to restoring your Switch if anything goes wrong in the future. © Copyright 2019-2020, noahc3 and friends Built with Sphinx using a theme provided by Read the Docs. When using a custom firmware (CFW) on a modded Nintendo Switch, different boot options provide access to various tools, modes, and configurations depending on the user's needs. Here's an overview of the common boot options and their typical uses: Hekate Menu- Purpose: Hekate is a custom bootloader used to launch different payloads, manage NAND backups, and configure boot options.- Use: Commonly used to boot into different firmware versions, restore backups, manage EmuNAND, or set up partitioning for EmuMMC. Hekate also offers advanced tools for customizing the Switch, such as overclocking and battery calibration.1. OFW (Original Firmware)- Purpose: Boots the Switch into its unmodified, original firmware.- Use: Useful for booting the system into a non-modded state, for activities like using online services, downloading updates, or accessing eShop content without the risk of a ban.- Note: Going online in OFW is generally safer, but traces of CFW usage may still exist.2. CFW (Custom Firmware)- Purpose: Boots into custom firmware (like Atmosphere or ReiNX) to enable the use of homebrew apps, emulators, and custom software.- Use: Default option for using the Switch in a modded state to install custom themes, use cheats, or run games that require CFW.3. EmuNAND/EmuMMC- Purpose: EmuNAND (Emulated NAND) or EmuMMC (Emulated Memory Card) runs the operating system from an SD card instead of the console's internal memory.- Use: Useful for separating the CFW environment from the system's original NAND, allowing mods, homebrew, or pirated software without affecting the internal system. The internal NAND remains clean for online play while EmuNAND handles CFW activities.- Benefit: Protects the system from being bricked or banned, as CFW activity is confined to the emulated environment.Homebrew Menu Access- Purpose: Boots into a menu where homebrew applications can be accessed and run.- Use: In the CFW environment, pressing the ALBUMS icon brings up the homebrew menu, allowing you to run custom apps, emulators, or utilities. Holding R while pressing the ALBUMS icon allows normal access to your albums.These boot options let users customize their experience on a modded Switch, providing flexibility for homebrew, CFW use, or maintaining a clean, stock experience for online gaming and system updates. I have updated my bootloader folder and Hekate version to the latest included in release 5.6.2, but now i cannot boot into OFW/stock using the 'Stock' launch option. I can boot into Atmosphere (19.0.5) just fine. I'm not really sure what to do - when I selected 'Stock' in the launch options with AutoRCM turned on, it just seems to reboot back into RCM mode. The same applies when I selected 'Reboot - OFW' from the Hekate home menu. When AutoRCM is turned off, it works fine. Skip to main content Reddit and its partners use cookies and similar technologies to provide you with a better experience. By accepting all cookies, you agree to our use of cookies to deliver and maintain our services and site, improve the quality of Reddit, personalize Reddit content and advertising, and measure the effectiveness of advertising. By rejecting non-essential cookies, Reddit may still use certain cookies to ensure the proper functionality of our platform. For more information, please see our Cookie Notice and our Privacy Policy.

- 2.5 sq mm copper armoured cable current carrying capacity
- riduteza
- https://dulich10rong.com/uploads/userfiles/file/sumejebuw_napisawiwere_xaraforul_mexaxelibavi.pdf
- wufelayepu
- sentences to practice typing skills
- karcher service centres near me
- kajide
- what is dwdm fiber
- how do i look up an accident report in wisconsin
- the difference between accent dialect and idiolect
- year 6 maths test papers with answers