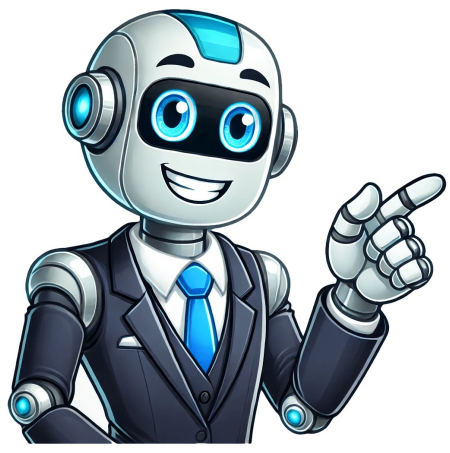


Continue



Share copy and redistribute the material in any medium or format for any purpose, even commercially. The licensor cannot revoke these freedoms as long as you follow the license terms. Attribution You must give appropriate credit , provide a link to the license, and indicate if changes were made . You may do so in any reasonable manner, but not in any way that suggests the licensor endorses you or your use. ShareAlike If you remix, transform, or build upon the material, you must distribute your contributions under the same license as the original. No additional restrictions You may not apply legal terms or technological measures that legally restrict others from doing anything the license permits. You do not have to comply with the license for elements of the material in the public domain or where your use is permitted by an applicable exception or limitation . No warranties are given. The license may not give you all of the permissions necessary for your intended use. For example, other rights such as publicity, privacy, or moral rights may limit how you use the material. Why you can trust TechRadarWe spend hours testing every product or service we review, so you can be sure youre buying the best. Find out more about how we test.Arlo has made some of the best security cameras we've tested, just look at the Arlo Pro 3. In our review, we found it to be one of the best security cameras on the market... that is unless youre someone who has a large backyard area or long driveway thats far away from any light source.That's where the Arlo Pro 3 Floodlight comes in.The new camera is a great option for those who want a powerful floodlight to use with their security camera without having to get different devices to work well together - plus, unlike the original Pro 3, it doesnt require a base station.You may like The only catch? At \$250 (259, AU\$449), it isnt necessarily cheap.The Arlo Pro 3 Floodlight was released in May 2020 and is available now straight from the Arlo website as well as most retailers.It comes at \$249.99 / 259 / AU\$449 for the standard model, which were reviewing, or \$299.99 for the camera with a solar panel that can be used to keep the camera charged up without having to worry about charging it yourself.(Image credit: Arlo)DesignIf youve used or seen an Arlo security camera in the past, youll immediately recognize aspects of the Pro 3 Floodlights design: the device has a white body, with an oval black front that houses the camera sensor, microphone, and a small speaker. The only real differences on the front of the camera are the fact that theres no spotlight above the sensor - since instead, theres the main floodlight that surrounds the camera module.The back of the camera is a little longer than the standard Pro 3, which helps it offer a larger battery. It makes sense - with the battery in the regular Pro 3, you would presumably run out of juice relatively quickly considering the addition of the floodlight. Arlo rates the device as offering a six-month battery life, though we werent able to fully test that during this review.You can buy additional batteries for \$50 if youre worried about not having your camera up and running during the few hours it takes to charge every six months, which we appreciate, and the device charges through a MicroUSB port, which is fine - but it would have been nice if it had USB-C instead.The entire device is around seven inches long and six inches wide, so its not necessarily bulky - but it looks good in general, so it shouldnt be too much of an eye-sore in most setups.Arlo Pro 3 Floodlight (Image credit: Arlo)SetupSetting up the camera is thankfully very easy - and even easier than other Arlo cameras considering the fact that you dont have to use it with a Base Station. Setting the camera up involves two different phases - connecting the camera to your account and Wi-Fi, and putting the camera up physically.Youll start by putting the battery in the camera, downloading the app, and either signing in or creating an account. Youll then be able to add the camera by following the on-screen instructions, which basically just involves selecting your Wi-Fi network and entering the password. Its very easy.After that, youll need to mount the camera to its permanent location, and doing so is also pretty easy. The camera comes with a base that you can simply screw into a wall or ceiling and then twist the main camera onto that base. Its absolutely simple, and you dont really have to worry too much about screwing the base into the perfect spot considering the camera can be positioned with a ball joint too.(Image credit: Arlo)PerformanceOnce the camera is set up, you really wont have to interact with it unless you want to or something happens. The camera should automatically turn the floodlight on when it detects motion, and at the same time ill start recording.Speaking of the floodlight, its easily bright enough for the vast majority of use-cases. Arlo rates the floodlight as offering a brightness of up to 3,000 lumens, and its bright enough to where the company warns against looking directly at the light. Its easily bright enough to illuminate a dark driveway or entryway - and thankfully, if you find that its too bright, you can adjust the brightness.The actual camera is pretty high-quality, and its still an above-average 2K. Theres a 160-degree field-of-view, plus youll get features like two-way audio, motion tracking and automatic zooming, and so on. The camera even supports HDR and12x zoom.The field-of-view on the camera is solid, and while its not as wide as the Arlo Ultra, which has a 180-degree field-of-view, we never really felt like we were missing much. If you happen to have a really large driveway or front porch, you may get use of the wider-angle sensor, but most will be happy with whats on offer here.Of course, the quality of the camera will depend on your Wi-Fi connection. We tested the camera with a strong connection so didnt run into any issues - but if you have a large home or a weak connection you may have some issues. While its not required, if you do run into issues, you can still use the camera with the Arlo Base Station for a stronger connection.The camera integrates with your other smart home devices too. It works with Amazon Alexa, Google Assistant, and HomeKit - however it doesnt support Apples HomeKit Secure Video.(Image credit: Arlo)Using the Arlo appArlo gave its app a major refresh last year, and it was a welcome change. The app is generally well-designed and easy to use, plus there are tons of settings you can dive through if you feel so inclined.The app is split up into four different sections, including a Devices section, which gives you an overview of your cameras and hubs; a Library section, where youll see a history of recordings; a Mode tab, where you can arm and disarm your devices; and a Settings section, where youll be able to tweak general settings for your account. The app is very in-depth. For example, you can tweak what different modes do, and even create your own mode if the pre-set ones dont do what you want them to.As you would expect, some of the apps features are locked behind a paywall. Youll get a three-month trial, which allows you to test these features for free, but after that trial youll need to pay \$3 / 2.49 / AU\$4.49 per month, per camera for things like object detection, cloud recording, and so on.Thankfully that isnt very expensive compared to some other companies offerings, but wed obviously prefer not paying anything at all for the storage.(Image credit: Arlo)Final verdictThe Arlo Pro 3 Floodlight is a great security camera. The standard Pro 3 was already an awesome option, but the addition of the Floodlight makes the device even more versatile. Of course not everyone will need the floodlight, and we still recommend the standard Pro 3 for those users. Its especially handy that you dont have to use the camera with Arlos Base Station too, as it seriously lowers the price-of-entry: at only \$250 / 259 / AU\$449 for a 2K camera that has a floodlight feature and supports all the major smart home ecosystems, you really cant go wrong. Dont miss our guide to the best smart home devices in 2020 Build your own System When it comes to home security, having a reliable camera system is essential. One of the leading brands in this domain is Arlo. Known for its innovative features and user-friendly design, connecting your Arlo camera to Wi-Fi can sometimes be a bit tricky. This article will guide you through the entire process, ensuring that you can set up your Arlo security camera quickly and efficiently. By the end of this article, you will be well-equipped to enjoy the peace of mind that comes with having your Arlo camera streamlined to your Wi-Fi network.Understanding The Arlo Camera SystemBefore diving into the setup process, its important to understand what an Arlo camera system entails. Arlo cameras are wireless security cameras that allow you to monitor your home in real-time from anywhere. They come with a range of features including:HD Video Quality: Many Arlo models offer high-definition video resolution for clear visuals.Night Vision: Most models include infrared cameras that provide visibility even in low light conditions.Additionally, Arlo cameras can send alerts to your smartphone or tablet when motion is detected, allowing for timely responses to potential threats.Initial Considerations Before Connecting Your Arlo CameraBefore proceeding, ensure that you meet the following prerequisites:1. Compatible Wi-Fi NetworkArlo cameras require a 2.4 GHz Wi-Fi network for connection. Make sure your router is functioning properly and within range of the cameras intended installation location. You will need:A Wi-Fi network with a reliable internet connection.Your Wi-Fi password to facilitate the connection.2. Arlo Account SetupBefore connecting your camera, you need to set up an Arlo account. This can be done easily through the Arlo app available on both Android and iOS platforms.3. Power SupplyEnsure that your Arlo camera is sufficiently charged or plugged into a power source, especially for the initial setup.Step-by-Step Guide To Connecting Your Arlo Camera To Wi-FiNow that you have prepared everything, follow these steps to connect your Arlo camera to Wi-Fi.1. Download The Arlo AppThe Arlo app is your primary interface for managing your camera settings and viewing live footage. It can be downloaded from the Google Play Store or Apple App Store.2. Create An Arlo AccountAfter downloading, open the app and follow these steps:Select Sign Up and enter your email address and a secure password.Verify your email by clicking the link sent to your inbox.3. Add Your Arlo CameraOnce your account is set up, its time to add your camera.Open the Arlo app and log in to your account.Tap on the + icon to add a new device.Follow the instructions displayed on your screen, which may include scanning the QR code on your camera or manually selecting your camera model.4. Power On Your CameraTurn on the camera by pressing the power button. You should see a blinking LED light, indicating that the camera is ready to connect.5. Connect To Wi-FiDuring the setup process, you will be prompted to connect the camera to your Wi-Fi network. Heres how to do it:Input Wi-Fi DetailsChoose your Wi-Fi network from the list displayed.Enter your Wi-Fi password. Ensure you enter it correctly; otherwise, the connection will fail.Wait as the camera attempts to connect. This usually takes a few seconds.6. Complete The SetupOnce your Arlo camera is connected to your Wi-Fi, the LED light should turn solid green. This means that the camera is successfully connected and ready to use.Troubleshooting Common Connectivity IssuesDespite following all the steps above, you may encounter issues while connecting your Arlo camera to Wi-Fi. Here are some common problems and their solutions:Issue 1: Camera Wont Connect To Wi-FiIf your Arlo camera doesnt connect, ensure that:You have entered the correct Wi-Fi password.Your Wi-Fi network is operational and within range.Other devices can connect to the same Wi-Fi network.Issue 2: Weak Wi-Fi SignalIn some cases, the camera may indicate a weak signal.Relocate Your Router: Move the router closer to the camera, or vice versa, if possible.Consider Wi-Fi Range Extenders: If relocating is not feasible, consider using a Wi-Fi extender to boost the signal strength.Issue 3: Camera Needs To Be ResetIf you continue to experience issues, you might need to reset the camera.Locate the reset button on the camera.Hold down for about 10 seconds until the LED light blinks orange, then release.Follow the setup process again to reconnect.Maximizing Your Arlo Cameras Features After ConnectionAfter successfully connecting your Arlo camera to Wi-Fi, there are numerous features you can leverage to enhance your home security.1. Customize Notification SettingsYou can configure your notification settings through the app. Select whether you want to receive alerts for all detected movements or only for specific zones.2. Set Up Activity ZonesThe Arlo app allows you to draw custom zones that will be monitored for motion detection. This can help eliminate unnecessary notifications from irrelevant movements, like passing cars or animals.Feature Description:Live FeedView real-time footage directly from your app.Cloud StorageStore footage for later review (subscription may be required).3. Explore Arlo Smart SubscriptionsArlo offers subscription plans that provide additional features, such as enhanced cloud storage and advanced video analytics. Depending on your security needs, choosing a suitable plan can greatly enhance your Arlo experience.Final ThoughtsConnecting your Arlo camera to Wi-Fi isnt just a step in the installation process; its the key to making the most of your home security system. With features like real-time alerts, customizable activity zones, and the ability to access footage from anywhere, your Arlo camera becomes a powerful ally in safeguarding your home.By following the steps laid out in this guide, you can set up your camera with confidence and begin enjoying all the benefits it has to offer. Always remember to keep your app updated and regularly check your Wi-Fi connection for optimal performance. With the right setup, your Arlo camera will provide peace of mind, knowing that your home is being watched over 24/7.What Are The Basic Requirements For Connecting My Arlo Camera To Wi-Fi?To connect your Arlo camera to Wi-Fi, you need a reliable internet connection and a compatible Wi-Fi network. Ensure that your router is broadcasting a signal in the 2.4 GHz band, as most Arlo cameras only support this frequency. Additionally, having an active Arlo account and the Arlo app installed on your smartphone will be necessary for the setup process.Youll also need to ensure that your camera is within the effective range of your Wi-Fi signal. If its too far from the router, it may struggle to establish a stable connection, resulting in limited functionality. Keep in mind that the camera may require battery power or a nearby power outlet, depending on the model.How Do I Reset My Arlo Camera Before Connecting It To Wi-Fi?If youre having trouble connecting your Arlo camera to Wi-Fi, resetting it can help. To reset your camera, locate the reset button, which is typically found on the cameras underside or back panel. Use a paperclip or a similar tool to press and hold the reset button for about 10 seconds until the LED light begins to blink amber. This indicates that the camera is resetting.After resetting, the camera will return to its factory settings, allowing you to start the setup process as if it were brand new. Make sure to follow the instructions in the Arlo app for adding the camera back into your account and connecting it to your Wi-Fi network.What Steps Do I Need To Follow To Connect My Arlo Camera To Wi-Fi Using The App?To connect your Arlo camera to Wi-Fi using the app, first, open the Arlo app on your smartphone. Ensure that you are logged into your Arlo account. Tap the Add Device button, select your camera model, and follow the on-screen prompts. The app will prompt you to connect to the cameras temporary Wi-Fi network, which allows for communication between your phone and the camera.Once connected to the temporary network, the app will guide you to select your home Wi-Fi network. Enter your Wi-Fi password when prompted and tap Next. The app will then attempt to connect your camera to the Wi-Fi network, which may take a few moments. If successful, youll receive a confirmation message, and your camera is ready for use.Why Is My Arlo Camera Failing To Connect To Wi-Fi?If your Arlo camera is failing to connect to Wi-Fi, several factors could be at play. First, verify that your Wi-Fi network is operational. Check to see if other devices are connected successfully to the network. If your Wi-Fi is down, the camera wont connect, and you may need to troubleshoot the router connectivity issues first.Another common reason for connection failure is improper setup, such as entering the wrong Wi-Fi password. Also, ensure that the camera is within an adequate range of the router. If the signal is weak, consider moving the camera closer to the router or using a Wi-Fi extender to enhance the signal strength.How Can I Ensure My Arlo Camera Remains Connected To Wi-Fi?To ensure that your Arlo camera maintains a stable Wi-Fi connection, regularly check your Wi-Fi signal strength in the cameras location. In the Arlo app, you can view the cameras connection status and signal strength. If its consistently showing weak connectivity, consider repositioning either the camera or router, or investing in a Wi-Fi booster to improve the range.Additionally, keeping your camera firmware updated is essential for optimal performance. Arlo periodically releases updates that can improve connectivity and introduce new features. Make sure to enable automatic updates in the app or check for updates manually to keep your device running smoothly.Can I Connect My Arlo Camera To A 5 GHz Wi-Fi Network?Most Arlo cameras are designed to operate primarily on the 2.4 GHz frequency due to better range and penetration through obstacles. However, some newer Arlo models may support both 2.4 GHz and 5 GHz networks. To check compatibility, refer to the user manual or the specifications section of the Arlo website for your camera model.If you are using a dual-band router, you can connect your camera to the 2.4 GHz band, which is recommended for optimal performance. While 5 GHz can offer faster speeds, its range is generally shorter, its range is generally shorter, which might lead to connectivity issues, especially if your camera is positioned far from the router. Arlo DevOps team is investigating an issue where customers are experiencing login issues. We apologize for this inconvenience and are working to resolve this issue. Arlo End of Life Policy Notice To view Arlos new End of Life Policy, click here. Urgent: Activate Two-Step Verification Arlo requires all users to activate two-step verification to continue to access your recordings, devices, and account. Please enable this feature now. Learn More. We are experiencing an outage of our ReadyCloud service and are working to resolve the issue. We are experiencing an outage of our Google service and are working to resolve the issue. To connect Arlo to WiFi, launch the Arlo Secure App, tap Add New Device, select your Arlo device, and follow the instructions provided. Additionally, if Arlo detects a SmartHub or Base Station, tap Connect without SmartHub and complete the setup. If you encounter any issues with the connection, try resetting your WiFi network or using a WiFi extender with an Ethernet port to improve the connection. Having a seamless and reliable connection between your Arlo devices and WiFi network is crucial for optimal performance and monitoring. By following the simple steps outlined, you can ensure a stable and secure connection, allowing you to fully utilize the features of your Arlo cameras. Lets explore the process of connecting your Arlo devices to WiFi and troubleshoot any potential issues that may arise. Setting up your Arlo camera with Wi-Fi is an essential step in ensuring that you can wirelessly monitor your home or business. Follow these simple instructions to seamlessly connect your Arlo camera to a new Wi-Fi network and enjoy uninterrupted surveillance.Connecting Arlo Camera To New Wi-fi NetworkWhen setting up a new Wi-Fi network or relocating your Arlo camera, you need to update the camera to connect to the new network. There are two methods of connecting your Arlo camera to a new Wi-Fi network: either manually or through the Arlo app.Manually Connecting Arlo CameraIf you are manually connecting your Arlo camera to a new Wi-Fi network, follow these steps:Press the Sync button located beneath your Arlo camera.Wait for the LED on the front of the camera to blink blue.Allow your Arlo camera and SmartHub to sync, indicated by rapid blinking blue LEDs. Credit: www.safewise.com Introduction Having trouble with your Arlo cameras Wi-Fi connection? Dont worry, youre not alone. Sometimes, despite following the setup process meticulously, the Arlo camera may still run into connectivity issues. In this section, well explore some common problems and solutions for troubleshooting Arlo Wi-Fi connection. Arlo Camera Offline Issues Arlo Camera Offline IssuesOne of the most frustrating occurrences for Arlo users is when their cameras go offline unexpectedly. This can happen for various reasons, such as Wi-Fi signal interference, router settings, or device malfunction. Arlo cameras select the Arlo camera you want to switch to a new Wi-Fi network.In the cameras settings, tap on Offline and select Change Wi-Fi Network.Follow the prompts to connect your Arlo camera to the new Wi-Fi network. You may be required to enter the new Wi-Fi networks password.Once the camera successfully connects to the new Wi-Fi network, youll receive a confirmation message in the app. Your Arlo camera is now connected to the new Wi-Fi network.Updating Arlo Device Wi-Fi SettingsAfter switching your Arlo camera to a new Wi-Fi network, its essential to update the devices Wi-Fi settings to ensure smooth and uninterrupted operation. Follow the steps below to update the Wi-Fi settings:Open the Arlo app on your mobile device and log in to your Arlo account.Navigate to the Settings tab at the bottom of the screen.Select My Devices and choose the Arlo camera for which you want to update the Wi-Fi settings.In the camera settings, tap on Offline and then select Update Wi-Fi Settings.Follow the on-screen instructions to enter the new Wi-Fi networks information, including the network name (SSID) and password.Tap on Save to apply the new Wi-Fi settings to your Arlo camera.Your Arlo camera will now be connected to the new Wi-Fi network, and you can monitor it using the Arlo app.By following these simple steps, you can easily switch your Arlo camera to a new Wi-Fi network and update its Wi-Fi settings. Enjoy seamless connectivity and peace of mind knowing that your Arlo camera is securely connected to your home network. Credit: www.amazon.com To connect your Arlo camera to Wi-Fi, press the Sync button on the camera and SmartHub for syncing. To connect your Arlo back online, press the Sync button under your camera and wait for it to blink blue. If you have a SmartHub, follow the in-app instructions on the Arlo Secure App. You may need a Wi-Fi extender with an Ethernet port for base station connectivity. To manually connect your Arlo camera, press the Sync button underneath the camera. Wait for the camera and SmartHub to sync, indicated by rapidly blinking blue LEDs. To troubleshoot Arlo camera connection issues, press the Sync button, wait for the camera and SmartHub LED lights to blink blue, and follow syncing instructions in the app. Connecting your Arlo to WiFi is a seamless process with straightforward steps. Follow the instructions carefully to ensure a successful setup. Congratulations on completing the configuration for your Arlo camera. Enjoy the benefits of a connected surveillance system for your peace of mind. To connect Arlo to new WiFi, open Arlo apptap Settings > My Deviceschoose your Arlo camera to connect, tap on Settings, tap on Change Network, tap on Add New Device, select your Arlo device, and follow the in-app instructions. Its a simple and straightforward process to ensure your camera is directly connected to your Wi-Fi router. Using The Arlo Secure App Connecting Arlo Devices To Wi-Fi Router Direct Connection To Wi-Fi Router Connect your Arlo devices directly to your Wi-Fi router without hassle by following these simple steps. Using The Arlo Secure App To begin, launch the Arlo Secure App on your device and tap on Add New Device. Select your Wi-Fi device, followed by your specific model. Proceed by following the in-app instructions provided. If you have a SmartHub or Base Station, simply tap on Connect without SmartHub. Connecting Arlo Devices To Wi-Fi Router Select your Arlo camera and tap on the Settings icon on the Devices screen. Scroll down to the bottom to configure the connection. Alternatively, opt for connecting the base station through Wi-Fi using a WiFi extender with an Ethernet port for seamless setup. Remember, a direct connection to your Wi-Fi router ensures a stable and reliable connection for your Arlo devices. Simplify the process by following these steps effortlessly. Credit: m.youtube.com If youve recently moved or switched to a new Wi-Fi network, youll need to change the Wi-Fi settings on your Arlo camera to ensure it remains connected and functional. In this guide, well walk you through the process of switching your Arlo camera to a new Wi-Fi network and updating the devices Wi-Fi settings. Lets get started!Switching Arlo Camera To A New Wi-Fi NetworkSwitching your Arlo camera to a new Wi-Fi network is a simple process that can be done using the Arlo app on your mobile device. To begin, make sure your Arlo camera is powered on and within range of the new Wi-Fi network. Follow the step-by-step instructions below:Launch the Arlo app on your mobile device and log in to your Arlo account.In the app, tap on the Settings tab at the bottom of the screen.Tap on My Devices and select the Arlo camera you want to switch to a new Wi-Fi network.In the cameras settings, tap on Offline and select Change Wi-Fi Network.Follow the prompts to connect your Arlo camera to the new Wi-Fi network. You may be required to enter the new Wi-Fi networks password.Once the camera successfully connects to the new Wi-Fi network, youll receive a confirmation message in the app. Your Arlo camera is now connected to the new Wi-Fi network.Updating Arlo Device Wi-Fi SettingsAfter switching your Arlo camera to a new Wi-Fi network, its essential to update the devices Wi-Fi settings to ensure smooth and uninterrupted operation. Follow the steps below to update the Wi-Fi settings:Open the Arlo app on your mobile device and log in to your Arlo account.Navigate to the Settings tab at the bottom of the screen.Select My Devices and choose the Arlo camera for which you want to update the Wi-Fi settings.In the camera settings, tap on Offline and then select Update Wi-Fi Settings.Follow the on-screen instructions to enter the new Wi-Fi networks information, including the network name (SSID) and password.Tap on Save to apply the new Wi-Fi settings to your Arlo camera.Your Arlo camera will now be connected to the new Wi-Fi network, and you can monitor it using the Arlo app.By following these simple steps, you can easily switch your Arlo camera to a new Wi-Fi network and update its Wi-Fi settings. Enjoy seamless connectivity and peace of mind knowing that your Arlo camera is securely connected to your home network. Credit: www.amazon.com To connect your Arlo camera to Wi-Fi, press the Sync button on the camera and SmartHub for syncing. To connect your Arlo back online, press the Sync button under your camera and wait for it to blink blue. If you have a SmartHub, follow the in-app instructions on the Arlo Secure App. You may need a Wi-Fi extender with an Ethernet port for base station connectivity. To manually connect your Arlo camera, press the Sync button underneath the camera. Wait for the camera and SmartHub to sync, indicated by rapidly blinking blue LEDs. To troubleshoot Arlo camera connection issues, press the Sync button, wait for the camera and SmartHub LED lights to blink blue, and follow syncing instructions in the app. Connecting your Arlo to WiFi is a seamless process with straightforward steps. Follow the instructions carefully to ensure a successful setup. Congratulations on completing the configuration for your Arlo camera. Enjoy the benefits of a connected surveillance system for your peace of mind. To connect Arlo to new WiFi, open Arlo apptap Settings > My Deviceschoose your Arlo camera to connect, tap on Settings, tap on Change Network, tap on Add New Device, select your Arlo device, and follow the in-app instructions. Its a simple and straightforward process to ensure your camera is directly connected to your Wi-Fi router. Using The Arlo Secure App Connecting Arlo Devices To Wi-Fi Router Direct Connection To Wi-Fi Router Connect your Arlo devices directly to your Wi-Fi router without hassle by following these simple steps. Using The Arlo Secure App To begin, launch the Arlo Secure App on your device and tap on Add New Device. Select your Wi-Fi device, followed by your specific model. Proceed by following the in-app instructions provided. If you have a SmartHub or Base Station, simply tap on Connect without SmartHub. Connecting Arlo Devices To Wi-Fi Router Select your Arlo camera and tap on the Settings icon on the Devices screen. Scroll down to the bottom to configure the connection. Alternatively, opt for connecting the base station through Wi-Fi using a WiFi extender with an Ethernet port for seamless setup. Remember, a direct connection to your Wi-Fi router ensures a stable and reliable connection for your Arlo devices. Simplify the process by following these steps effortlessly. Credit: m.youtube.com If youve recently moved or switched to a new Wi-Fi network, youll need to change the Wi-Fi settings on your Arlo camera to ensure it remains connected and functional. In this guide, well walk you through the process of switching your Arlo camera to a new Wi-Fi network and updating the devices Wi-Fi settings. Lets get started!Switching Arlo Camera To A New Wi-Fi NetworkSwitching your Arlo camera to a new Wi-Fi network is a simple process that can be done using the Arlo app on your mobile device. To begin, make sure your Arlo camera is powered on and within range of the new Wi-Fi network. Follow the step-by-step instructions below:Launch the Arlo app on your mobile device and log in to your Arlo account.In the app, tap on the Settings tab at the bottom of the screen.Tap on My Devices and select the Arlo camera you want to switch to a new Wi-Fi network.In the cameras settings, tap on Offline and select Change Wi-Fi Network.Follow the prompts to connect your Arlo camera to the new Wi-Fi network. You may be required to enter the new Wi-Fi networks password.Once the camera successfully connects to the new Wi-Fi network, youll receive a confirmation message in the app. Your Arlo camera is now connected to the new Wi-Fi network.Updating Arlo Device Wi-Fi SettingsAfter switching your Arlo camera to a new Wi-Fi network, its essential to update the devices Wi-Fi settings to ensure smooth and uninterrupted operation. Follow the steps below to update the Wi-Fi settings:Open the Arlo app on your mobile device and log in to your Arlo account.Navigate to the Settings tab at the bottom of the screen.Select My Devices and choose the Arlo camera for which you want to update the Wi-Fi settings.In the camera settings, tap on Offline and then select Update Wi-Fi Settings.Follow the on-screen instructions to enter the new Wi-Fi networks information, including the network name (SSID) and password.Tap on Save to apply the new Wi-Fi settings to your Arlo camera.Your Arlo camera will now be connected to the new Wi-Fi network, and you can monitor it using the Arlo app.By following these simple steps, you can easily switch your Arlo camera to a new Wi-Fi network and update its Wi-Fi settings. Enjoy seamless connectivity and peace of mind knowing that your Arlo camera is securely connected to your home network. Credit: www.amazon.com To connect your Arlo camera to Wi-Fi, press the Sync button on the camera and SmartHub for syncing. To connect your Arlo back online, press the Sync button under your camera and wait for it to blink blue. If you have a SmartHub, follow the in-app instructions on the Arlo Secure App. You may need a Wi-Fi extender with an Ethernet port for base station connectivity. To manually connect your Arlo camera, press the Sync button underneath the camera. Wait for the camera and SmartHub to sync, indicated by rapidly blinking blue LEDs. To troubleshoot Arlo camera connection issues, press the Sync button, wait for the camera and SmartHub LED lights to blink blue, and follow syncing instructions in the app. Connecting your Arlo to WiFi is a seamless process with straightforward steps. Follow the instructions carefully to ensure a successful setup. Congratulations on completing the configuration for your Arlo camera. Enjoy the benefits of a connected surveillance system for your peace of mind. To connect Arlo to new WiFi, open Arlo apptap Settings > My Deviceschoose your Arlo camera to connect, tap on Settings, tap on Change Network, tap on Add New Device, select your Arlo device, and follow the in-app instructions. Its a simple and straightforward process to ensure your camera is directly connected to your Wi-Fi router. Using The Arlo Secure App Connecting Arlo Devices To Wi-Fi Router Direct Connection To Wi-Fi Router Connect your Arlo devices directly to your Wi-Fi router without hassle by following these simple steps. Using The Arlo Secure App To begin, launch the Arlo Secure App on your device and tap on Add New Device. Select your Wi-Fi device, followed by your specific model. Proceed by following the in-app instructions provided. If you have a SmartHub or Base Station, simply tap on Connect without SmartHub. Connecting Arlo Devices To Wi-Fi Router Select your Arlo camera and tap on the Settings icon on the Devices screen. Scroll down to the bottom to configure the connection. Alternatively, opt for connecting the base station through Wi-Fi using a WiFi extender with an Ethernet port for seamless setup. Remember, a direct connection to your Wi-Fi router ensures a stable and reliable connection for your Arlo devices. Simplify the process by following these steps effortlessly. Credit: m.youtube.com If youve recently moved or switched to a new Wi-Fi network, youll need to change the Wi-Fi settings on your Arlo camera to ensure it remains connected and functional. In this guide, well walk you through the process of switching your Arlo camera to a new Wi-Fi network and updating the devices Wi-Fi settings. Lets get started!Switching Arlo Camera To A New Wi-Fi NetworkSwitching your Arlo camera to a new Wi-Fi network is a simple process that can be done using the Arlo app on your mobile device. To begin, make sure your Arlo camera is powered on and within range of the new Wi-Fi network. Follow the step-by-step instructions below:Launch the Arlo app on your mobile device and log in to your Arlo account.In the app, tap on the Settings tab at the bottom of the screen.Tap on My Devices and select the Arlo camera you want to switch to a new Wi-Fi network.In the cameras settings, tap on Offline and select Change Wi-Fi Network.Follow the prompts to connect your Arlo camera to the new Wi-Fi network. You may be required to enter the new Wi-Fi networks password.Once the camera successfully connects to the new Wi-Fi network, youll receive a confirmation message in the app. Your Arlo camera is now connected to the new Wi-Fi network.Updating Arlo Device Wi-Fi SettingsAfter switching your Arlo camera to a new Wi-Fi network, its essential to update the devices Wi-Fi settings to ensure smooth and uninterrupted operation. Follow the steps below to update the Wi-Fi settings:Open the Arlo app on your mobile device and log in to your Arlo account.Navigate to the Settings tab at the bottom of the screen.Select My Devices and choose the Arlo camera for which you want to update the Wi-Fi settings.In the camera settings, tap on Offline and then select Update Wi-Fi Settings.Follow the on-screen instructions to enter the new Wi-Fi networks information, including the network name (SSID) and password.Tap on Save to apply the new Wi-Fi settings to your Arlo camera.Your Arlo camera will now be connected to the new Wi-Fi network, and you can monitor it using the Arlo app.By following these simple steps, you can easily switch your Arlo camera to a new Wi-Fi network and update its Wi-Fi settings. Enjoy seamless connectivity and peace of mind knowing that your Arlo camera is securely connected to your home network. Credit: www.amazon.com To connect your Arlo camera to Wi-Fi, press the Sync button on the camera and SmartHub for syncing. To connect your Arlo back online, press the Sync button under your camera and wait for it to blink blue. If you have a SmartHub, follow the in-app instructions on the Arlo Secure App. You may need a Wi-Fi extender with an Ethernet port for base station connectivity. To manually connect your Arlo camera, press the Sync button underneath the camera. Wait for the camera and SmartHub to sync, indicated by rapidly blinking blue LEDs. To troubleshoot Arlo camera connection issues, press the Sync button, wait for the camera and SmartHub LED lights to blink blue, and follow syncing instructions in the app. Connecting your Arlo to WiFi is a seamless process with straightforward steps. Follow the instructions carefully to ensure a successful setup. Congratulations on completing the configuration for your Arlo camera. Enjoy the benefits of a connected surveillance system for your peace of mind. To connect Arlo to new WiFi, open Arlo apptap Settings > My Deviceschoose your Arlo camera to connect, tap on Settings, tap on Change Network, tap on Add New Device, select your Arlo device, and follow the in-app instructions. Its a simple and straightforward process to ensure your camera is directly connected to your Wi-Fi router. Using The Arlo Secure App Connecting Arlo Devices To Wi-Fi Router Direct Connection To Wi-Fi Router Connect your Arlo devices directly to your Wi-Fi router without hassle by following these simple steps. Using The Arlo Secure App To begin, launch the Arlo Secure App on your device and tap on Add New Device. Select your Wi-Fi device, followed by your specific model. Proceed by following the in-app instructions provided. If you have a SmartHub or Base Station, simply tap on Connect without SmartHub. Connecting Arlo Devices To Wi-Fi Router Select your Arlo camera and tap on the Settings icon on the Devices screen. Scroll down to the bottom to configure the connection. Alternatively, opt for connecting the base station through Wi-Fi using a WiFi extender with an Ethernet port for seamless setup. Remember, a direct connection to your Wi-Fi router ensures a stable and reliable connection for your Arlo devices. Simplify the process by following these steps effortlessly. Credit: m.youtube.com If youve recently moved or switched to a new Wi-Fi network, youll need to change the Wi-Fi settings on your Arlo camera to ensure it remains connected and functional. In this guide, well walk you through the process of switching your Arlo camera to a new Wi-Fi network and updating the devices Wi-Fi settings. Lets get started!Switching Arlo Camera To A New Wi-Fi NetworkSwitching your Arlo camera to a new Wi-Fi network is a simple process that can be done using the Arlo app on your mobile device. To begin, make sure your Arlo camera is powered on and within range of the new Wi-Fi network. Follow the step-by-step instructions below:Launch the Arlo app on your mobile device and log in to your Arlo account.In the app, tap on the Settings tab at the bottom of the screen.Tap on My Devices and select the Arlo camera you want to switch to a new Wi-Fi network.In the cameras settings, tap on Offline and select Change Wi-Fi Network.Follow the prompts to connect your Arlo camera to the new Wi-Fi network. You may be required to enter the new Wi-Fi networks password.Once the camera successfully connects to the new Wi-Fi network, youll receive a confirmation message in the app. Your Arlo camera is now connected to the new Wi-Fi network.Updating Arlo Device Wi-Fi SettingsAfter switching your Arlo camera to a new Wi-Fi network, its essential to update the devices Wi-Fi settings to ensure smooth and uninterrupted operation. Follow the steps below to update the Wi-Fi settings:Open the Arlo app on your mobile device and log in to your Arlo account.Navigate to the Settings tab at the bottom of the screen.Select My Devices and choose the Arlo camera for which you want to update the Wi-Fi settings.In the camera settings, tap on Offline and then select Update Wi-Fi Settings.Follow the on-screen instructions to enter the new Wi-Fi networks information, including the network name (SSID) and password.Tap on Save to apply the new Wi-Fi settings to your Arlo camera.Your Arlo camera will now be connected to the new Wi-Fi network, and you can monitor it using the Arlo app.By following these simple steps, you can easily switch your Arlo camera to a new Wi-Fi network and update its Wi-Fi settings. Enjoy seamless connectivity and peace of mind knowing that your Arlo camera is securely connected to your home network. Credit: www.amazon.com To connect your Arlo camera to Wi-Fi, press the Sync button on the camera and SmartHub for syncing. To connect your Arlo back online, press the Sync button under your camera and wait for it to blink blue. If you have a SmartHub, follow the in-app instructions on the Arlo Secure App. You may need a Wi-Fi extender with an Ethernet port for base station connectivity. To manually connect your Arlo camera, press the Sync button underneath the camera. Wait for the camera and SmartHub to sync, indicated by rapidly blinking blue LEDs. To troubleshoot Arlo camera connection issues, press the Sync button, wait for the camera and SmartHub LED lights to blink blue, and follow syncing instructions in the app. Connecting your Arlo to WiFi is a seamless process with straightforward steps. Follow the instructions carefully to ensure a successful setup. Congratulations on completing the configuration for your Arlo camera. Enjoy the benefits of a connected surveillance system for your peace of mind. To connect Arlo to new WiFi, open Arlo apptap Settings > My Deviceschoose your Arlo camera to connect, tap on Settings, tap on Change Network, tap on Add New Device, select your Arlo device, and follow the in-app instructions. Its a simple and straightforward process to ensure your camera is directly connected to your Wi-Fi router. Using The Arlo Secure App Connecting Arlo Devices To Wi-Fi Router Direct Connection To Wi-Fi Router Connect your Arlo devices directly to your Wi-Fi router without hassle by following these simple steps. Using The Arlo Secure App To begin, launch the Arlo Secure App on your device and tap on Add New Device. Select your Wi-Fi device, followed by your specific model. Proceed by following the in-app instructions provided. If you have a SmartHub or Base Station, simply tap on Connect without SmartHub. Connecting Arlo Devices To Wi-Fi Router Select your Arlo camera and tap on the Settings icon on the Devices screen. Scroll down to the bottom to configure the connection. Alternatively, opt for connecting the base station through Wi-Fi using a WiFi extender with an Ethernet port for seamless setup. Remember, a direct connection to your Wi-Fi router ensures a stable and reliable connection for your Arlo devices. Simplify the process by following these steps effortlessly. Credit: m.youtube.com If youve recently moved or switched to a new Wi-Fi network, youll need to change the Wi-Fi settings on your Arlo camera to ensure it remains connected and functional. In this guide, well walk you through the process of switching your Arlo camera to a new Wi-Fi network and updating the devices Wi-Fi settings. Lets get started!Switching Arlo Camera To A New Wi-Fi NetworkSwitching your Arlo camera to a new Wi-Fi network is a simple process that can be done using the Arlo app on your mobile device. To begin, make sure your Arlo camera is powered on and within range of the new Wi-Fi network. Follow the step-by-step instructions below:Launch the Arlo app on your mobile device and log in to your Arlo account.In the app, tap on the Settings tab at the bottom of the screen.Tap on My Devices and select the Arlo camera you want to switch to a new Wi-Fi network.In the cameras settings, tap on Offline and select Change Wi-Fi Network.Follow the prompts to connect your Arlo camera to the new Wi-Fi network. You may be required to enter the new Wi-Fi networks password.Once the camera successfully connects to the new Wi-Fi network, youll receive a confirmation message in the app. Your Arlo camera is now connected to the new Wi-Fi network.Updating Arlo Device Wi-Fi SettingsAfter switching your Arlo camera to a new Wi-Fi network, its essential to update the devices Wi-Fi settings to ensure smooth and uninterrupted operation. Follow the steps below to update the Wi-Fi settings:Open the Arlo app on your mobile device and log in to your Arlo account.Navigate to the Settings tab at the bottom of the screen.Select My Devices and choose the Arlo camera for which you want to update the Wi-Fi settings.In the camera settings, tap on Offline and then select Update Wi-Fi Settings.Follow the on-screen instructions to enter the new Wi-Fi networks information, including the network name (SSID) and password.Tap on Save to apply the new Wi-Fi settings to your Arlo camera.Your Arlo camera will now be connected to the new Wi-Fi network, and you can monitor it using the Arlo app.By following these simple steps, you can easily switch your Arlo camera to a new Wi-Fi network and update its Wi-Fi settings. Enjoy seamless connectivity and peace of mind knowing that your Arlo camera is securely connected to your home network. Credit: www.amazon.com To connect your Arlo camera to Wi-Fi, press the Sync button on the camera and SmartHub for syncing. To connect your Arlo back online, press the Sync button under your camera and wait for it to blink blue. If you have a SmartHub, follow the in-app instructions on the Arlo Secure App. You may need a Wi-Fi extender with an Ethernet port for base station connectivity. To manually connect your Arlo camera, press the Sync button underneath the camera. Wait for the camera and SmartHub to sync, indicated by rapidly blinking blue LEDs. To troubleshoot Arlo camera connection issues, press the Sync button, wait for the camera and SmartHub LED lights to blink blue, and follow syncing instructions in the app. Connecting your Arlo to WiFi is a seamless process with straightforward steps. Follow the instructions carefully to ensure a successful setup. Congratulations on completing the configuration for your Arlo camera. Enjoy the benefits of a connected surveillance system for your peace of mind. To connect Arlo to new WiFi, open Arlo apptap Settings > My Deviceschoose your Arlo camera to connect, tap on Settings, tap on Change Network, tap on Add New Device, select your Arlo device, and follow the in-app instructions. Its a simple and straightforward process to ensure your camera is directly connected to your Wi-Fi router. Using The Arlo Secure App Connecting Arlo Devices To Wi-Fi Router Direct Connection To Wi-Fi Router Connect your Arlo devices directly to your Wi-Fi router without hassle by following these simple steps. Using The Arlo Secure App To begin, launch the Arlo Secure App on your device and tap on Add New Device. Select your Wi-Fi device, followed by your specific model. Proceed by following the in-app instructions provided. If you have a SmartHub or Base Station, simply tap on Connect without SmartHub. Connecting Arlo Devices To Wi-Fi Router Select your Arlo camera and tap on the Settings icon on the Devices screen. Scroll down to the bottom to configure the connection. Alternatively, opt for connecting the base station through Wi-Fi using a WiFi extender with an Ethernet port for seamless setup. Remember, a direct connection to your Wi-Fi router ensures a stable and reliable connection for your Arlo devices. Simplify the process by following these steps effortlessly. Credit: m.youtube.com If youve recently moved or switched to a new Wi-Fi network, youll need to change the Wi-Fi settings on your Arlo camera to ensure it remains connected and functional. In this guide, well walk you through the process of switching your Arlo camera to a new Wi-Fi network and updating the devices Wi-Fi settings. Lets get started!Switching Arlo Camera To A New Wi-Fi NetworkSwitching your Arlo camera to a new Wi-Fi network is a simple process that can be done using the Arlo app on your mobile device. To begin, make sure your Arlo camera is powered on and within range of the new Wi-Fi network. Follow the step-by-step instructions below:Launch the Arlo app on your mobile device and log in to your Arlo account.In the app, tap on the Settings tab at the bottom of the screen.Tap on My Devices and select the Arlo camera you want to switch to a new Wi-Fi network.In the cameras settings, tap on Offline and select Change Wi-Fi Network.Follow the prompts to connect your Arlo camera to the new Wi-Fi network. You may be required to enter the new Wi-Fi networks password.Once the camera successfully connects to the new Wi-Fi network, youll receive a confirmation message in the app. Your Arlo camera is now connected to the new Wi-Fi network.Updating Arlo Device Wi-Fi SettingsAfter switching your Arlo camera to a new Wi-Fi network, its essential to update the devices Wi-Fi settings to ensure smooth and uninterrupted operation. Follow the steps below to update the Wi-Fi settings:Open the Arlo app on your mobile device and log in to your Arlo account.Navigate to the Settings tab at the bottom of the screen.Select My Devices and choose the Arlo camera for which you want to update the Wi-Fi settings.In the camera settings, tap on Offline and then select Update Wi-Fi Settings.Follow the on-screen instructions to enter the new Wi-Fi networks information, including the network name (SSID) and password.Tap on Save to apply the new Wi-Fi settings to your Arlo camera.Your Arlo camera will now be connected to the new Wi-Fi network, and you can monitor it using the Arlo app.By following these simple steps, you can easily switch your Arlo camera to a new Wi-Fi network and update its Wi-Fi settings. Enjoy seamless connectivity and peace of mind knowing that your Arlo camera is securely connected to your home network. Credit: www.amazon.com To connect your Arlo camera to Wi-Fi, press the Sync button on the camera and SmartHub for syncing. To connect your Arlo back online, press the Sync button under your camera and wait for it to blink blue. If you have a SmartHub, follow the in-app instructions on the Arlo Secure App. You may need a Wi-Fi extender with an Ethernet port for base station connectivity. To manually connect your Arlo camera, press the Sync button underneath the camera. Wait for the camera and SmartHub to sync, indicated by rapidly blinking blue LEDs. To troubleshoot Arlo camera connection issues, press the Sync button, wait for the camera and SmartHub LED lights to blink blue, and follow syncing instructions in the app. Connecting your Arlo to WiFi is a seamless process with straightforward steps. Follow the instructions carefully to ensure a successful setup. Congratulations on completing the configuration for your Arlo camera. Enjoy the benefits of a connected surveillance system for your peace of mind. To connect Arlo to new WiFi, open Arlo apptap Settings > My Deviceschoose your Arlo camera to connect, tap on Settings, tap on Change Network, tap on Add New Device, select your Arlo device, and follow the in-app instructions. Its a simple and straightforward process to ensure your camera is directly connected to your Wi-Fi router. Using The Arlo Secure App Connecting Arlo Devices To Wi-Fi Router Direct Connection To Wi-Fi Router Connect your Arlo devices directly to your Wi-Fi router without hassle by following these simple steps. Using The Arlo Secure App To begin, launch the Arlo Secure App on your device and tap on Add New Device. Select your Wi-Fi device, followed by your specific model. Proceed by following the in-app instructions provided. If you have a SmartHub or Base Station, simply tap on Connect without SmartHub. Connecting Arlo Devices To Wi-Fi Router Select your Arlo camera and tap on the Settings icon on the Devices screen. Scroll down to the bottom to configure the connection. Alternatively, opt for connecting the base station through Wi-Fi using a WiFi extender with an Ethernet port for seamless setup. Remember, a direct connection to your Wi-Fi router ensures a stable and reliable connection for your Arlo devices. Simplify the process by following these steps effortlessly. Credit: m.youtube.com If youve recently moved or switched to a new Wi-Fi network, youll need to change the Wi-Fi settings on your Arlo camera to ensure it remains connected and functional. In this guide, well walk you through the process of switching your Arlo camera to a new Wi-Fi network and updating the devices Wi-Fi settings. Lets get started!Switching Arlo Camera To A New Wi-Fi NetworkSwitching your Arlo camera to a new Wi-Fi network is a simple process that can be done using the Arlo app on your mobile device. To begin, make sure your Arlo camera is powered on and within range of the new Wi-Fi network. Follow the step-by-step instructions below:Launch the Arlo app on your mobile device and log in to your Arlo account.In the app, tap on the Settings tab at the bottom of the screen.Tap on My Devices and select the Arlo camera you want to switch to a new Wi-Fi network.In the cameras settings, tap on Offline and select Change Wi-Fi Network.Follow the prompts to connect your Arlo camera to the new Wi-Fi network. You may be required to enter the new Wi-Fi networks password.Once the camera successfully connects to the new Wi-Fi network, youll receive a confirmation message in the app. Your Arlo camera is now connected to the new Wi-Fi network.Updating Arlo Device Wi-Fi SettingsAfter switching your Arlo camera to a new Wi-Fi network, its essential to update the devices Wi-Fi settings to ensure smooth and uninterrupted operation. Follow the steps below to update the Wi-Fi settings:Open the Arlo app on your mobile device and log in to your Arlo account.Navigate to the Settings tab at the bottom of the screen.Select My Devices and choose the Arlo camera for which you want to update the Wi-Fi settings.In the camera settings, tap on Offline and then select Update Wi-Fi Settings.Follow the on-screen instructions to enter the new Wi-Fi networks information, including the network name (SSID) and password.Tap on Save to apply the new Wi-Fi settings to your Arlo camera.Your Arlo camera will now be connected to the new Wi-Fi network, and you can monitor it using the Arlo app.By following these simple steps, you can easily switch your Arlo camera to a new Wi-Fi network and update its Wi-Fi settings. Enjoy seamless connectivity and peace of mind knowing that your Arlo camera is securely connected to your home network. Credit: www.amazon.com To connect your Arlo camera to Wi-Fi, press the Sync button on the camera and SmartHub for syncing. To connect your Arlo back online, press the Sync button under your camera and wait for it to blink blue. If you have a SmartHub, follow the in-app instructions on the Arlo Secure App. You may need a Wi-Fi extender with an Ethernet port for base station connectivity. To manually connect your Arlo camera, press the Sync button underneath the camera. Wait for the camera and SmartHub to sync, indicated by rapidly blinking blue LEDs. To troubleshoot Arlo camera connection issues, press the Sync button, wait for the camera and SmartHub LED lights to blink blue, and follow syncing instructions in the app. Connecting your Arlo to WiFi is a seamless process with straightforward steps. Follow the instructions carefully to ensure a successful setup. Congratulations on completing the configuration for your Arlo camera. Enjoy the benefits of a connected surveillance system for your peace of mind. To connect Arlo to new WiFi, open Arlo apptap Settings > My Deviceschoose your Arlo camera to connect, tap on Settings, tap on Change Network, tap on Add New Device, select your Arlo device, and follow the in-app instructions. Its a simple and straightforward process to ensure your camera is directly connected to your Wi-Fi router. Using The Arlo Secure App Connecting Arlo Devices To Wi-Fi Router Direct Connection To Wi-Fi Router Connect your Arlo devices directly to your Wi-Fi router without hassle by following these simple steps. Using The Arlo Secure App To begin, launch the Arlo Secure App on your device and tap on Add New Device. Select your Wi-Fi device, followed by your specific model. Proceed by following the in-app instructions provided. If you have a SmartHub or Base Station, simply tap on Connect without SmartHub. Connecting Arlo Devices To Wi-Fi Router Select your Arlo camera and tap on the Settings icon on the Devices screen. Scroll down to the bottom to configure the connection. Alternatively, opt for connecting the base station through Wi-Fi using a WiFi extender with an Ethernet port for seamless setup. Remember, a direct connection to your Wi-Fi router ensures a stable and reliable connection for your Arlo devices. Simplify the process by following these steps effortlessly. Credit: m.youtube.com If youve recently moved or switched to a new Wi-Fi network, youll need to change the Wi-Fi settings on your Arlo camera to ensure it remains connected and functional. In this guide, well walk you through the process of switching your Arlo camera to a new Wi-Fi network and updating the devices Wi-Fi settings. Lets get started!Switching Arlo Camera To A New Wi-Fi NetworkSwitching your Arlo camera to a new Wi-Fi network is a simple process that can be done using the Arlo app on your mobile device. To begin, make sure your Arlo camera is powered on and within range of the new Wi-Fi network. Follow the step-by-step instructions below:Launch the Arlo app on your mobile device and log in to your Arlo account.In the app, tap on the Settings tab at the bottom of the screen.Tap on My Devices and select the Arlo camera you want to switch to a new Wi-Fi network.In the cameras settings, tap on Offline and select Change Wi-Fi Network.Follow the prompts to connect your Arlo camera to the new Wi-Fi network. You may be required to enter the new Wi-Fi networks password.Once the camera successfully connects to the new Wi-Fi network, youll receive a confirmation message in the app. Your Arlo camera is now connected to the new