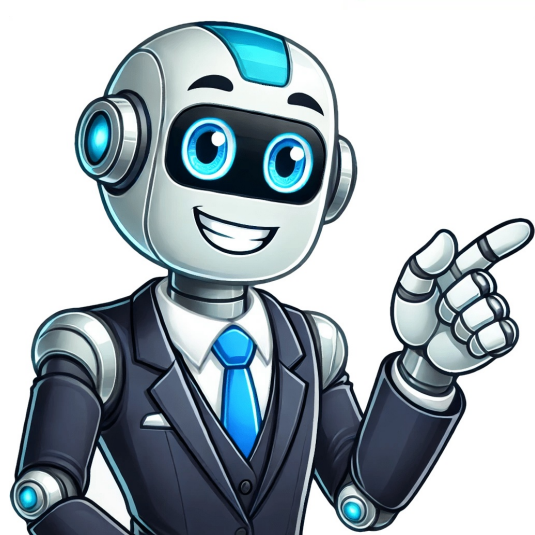


Click to prove  
you're human



















## How much is a contact lens exam

Updated: January 30, 2025People are typically surprised to learn the cost of contact lens exam in 2025 while testing is similar to the cost of a standard eye exam.The primary difference between a contact lens exam and a regular eye exam involves the need for your eye doctor to obtain accurate dimensions of your eye’s shape, especially the cornea and lens so that your contacts fit comfortably.In addition, certain eye conditions may warrant further assessments if you need specialized contact lens to accommodate keratoconus, astigmatism, presbyopia, dry eye syndrome and other unique eye problems.Average Cost of a Contact Lens Exam Without Insurance in 2025Typically, the average cost of a contact lens exam ranges between \$120-\$250. The average cost of a regular eye exam will vary depending on where you live and the type of optometry office you visit.With that said, keep in mind these are averages.Contact lens fittings without insurance can start as low as \$100. You'll find big brand names like America's Best will offer the cheapest options. We suggest calling several optical/optometry offices near you to find the best eye exam rates for your needs.Discount RetailersEye exams at large retail chains like Visionworks and Walmart will generally cost less, and eye doctors in private practice will charge more.Optometrists that work in department and big box stores often charge less, but may not provide the in-depth contact lens exam you need to receive correctly fitting contacts offering superior accommodation qualities.Insurance CoverageHaving eye insurance will significantly reduce the cost of all eye health and vision exams.When you purchase an eye insurance policy, your out-of-pocket costs decrease according to the deductible amount you choose.Eye insurance works similar to health insurance and helps pay for exams, glasses, contact lenses, eye disease treatments and even prescriptions. If you are interested in obtaining eye and vision insurance, we would be glad to discuss options with you and assist you in finding eye insurance to fit your needs.Other Factors Contributing to the Cost of a Contact Lens ExamIf you need tests outside the realm of standard eye testing, such as tear film or corneal topography, the cost of contact lens exam may be slightly higher than anticipated.However, these extra tests are necessary for determining what kind of contacts are right for you.If you do not have eye conditions other than refractive errors (nearsightedness, farsightedness and/or astigmatism), you may not require more in-depth eye testing.In addition, some eye conditions may need to be treated before you can wear contact lenses, such as blepharitis. An eyelid inflammation more commonly seen in older adults, blepharitis is treated with oral antibiotics, corticosteroids or topical antibiotics prescribed by your Jacksonville eye doctor.If you are concerned about possible added costs to your contact lens exam, we will be happy to discuss this matter with you.What To Expect During a Contact Lens FittingEnsuring your contact lenses are not too steep, too flat or wrongly sized is essential for preserving your eye's health and optimizing vision. During your contact lens exam with your Jacksonville eye doctor, you will have one or more of the following measurements taken of both eyes:The curvature of your cornea—using an ophthalmological device called a keratometer, your eye doctor measures corneal curvature for obtaining diameter and contour dimensions. Keratometry readings also determine whether you have astigmatism since they detect vision power differences across your cornea. Using this device helps your eye doctor find any irregularities existing on the surface of your eye that may indicate you need special contacts called toric contact lenses. Available as soft, disposable, extended wear and multifocal lenses, toric contact lenses are usually prescribed for people with astigmatism.Corneal topography—if keratometry does not provide enough information for your Jacksonville eye doctor, you may need to have your corneal surfaced mapped using a corneal topography device. This allows eye doctors to capture precise details not visible during a keratometry procedure by creating a corneal map comprised of different colors and contours.While keratometers measure curvature dimensions of your cornea by evaluating only four "points", corneal topography equipment is linked to computer software that analyzes thousands of corneal points established along predetermined lines.Slit-lamp test-the size of the iris and pupil plays a critical role in designing your contact lenses, especially if you need gas-permeable lenses. Pupil and iris measurements are taken with a biomicroscope, or slit lamp device consisting of a tiny microscope and intense light beam.Iris and pupil sizes vary significantly and contribute to how large contact lenses should be to fit correctly. Slit lamp tests are also useful for viewing the retina and optic nerve, for detecting cataracts, iritis and conjunctivitis and for monitoring macular degeneration and glaucoma.Tear film test-determine if you need special contact lenses due to inadequate tear production, your Jacksonville eye doctor may place a drop of liquid dye in both eyes to examine them with a slip lamp device.By placing a paper strip just under the lower eyelid of each eye, your eye doctor can also evaluate how well and how quickly eye fluids moisten the strip.Call Us Today To Schedule An Appointment!To schedule an appointment for a contact lens exam, please call our Jacksonville eye doctor today. VAL-Vision also provides professional preoperative and postoperative care for people planning on having LASIK surgery or other eye surgeries. Leave a reply The overall cost of contact lenses isn't just about the exam—the type of lenses you choose significantly affects your total expenses. Below is a general guide to expected pricing, though costs may vary depending on the brand, supplier, and any additional features.Rigid gas-permeable lenses can last a year or more, making them one of the most expensive per lens but a cost-effective option over time. Daily disposable lenses are designed to be replaced every day, ranging from \$720 to \$960 per year. Buying in bulk may help lower costs. Multifocal or bifocal contact lenses correct both near and far vision and tend to be more expensive, with annual costs reaching up to \$1,500. Colored contact lenses generally range from \$45 to \$90 per box of six, though colored lenses designed for astigmatism correction may be more expensive. Because contact lenses aren't one-size-fits-all, choosing the right lenses is key to clear vision and lasting comfort. At eyecarecenter, we offer a variety of specialty contact lenses to ensure you find the best fit for your vision, lifestyle, and budget.Additional Contact Lens Cost Factors to ConsiderWhen considering the total cost of contact lenses, don't forget about potential savings. Many vision insurance plans cover part of the expenses for eye exams, contact lenses, and prescription glasses. Depending on where you live, vision insurance may range from \$150 to \$180 per year and typically provides \$120 toward contact lenses or eyeglasses, full or partial coverage for a standard eye exam, and prescription lens coverage for glasses. At eyecarecenter, we accept major insurers like United Healthcare, Blue Cross Blue Shield, VSP, and EyeMed. Our team is happy to answer insurance-related questions and help you maximize your benefits.Once you've successfully adjusted to your first pair of contact lenses, renewing your prescription becomes simpler. As long as your lenses remain comfortable and your eyes stay healthy, future appointments may only require a quick prescription update. Always communicate any changes or concerns with your eyecarecenter optometrist—we're here to ensure you continue to enjoy clear, comfortable vision with the right contact lenses.What to Expect During Your Contact Lens ExamA comprehensive eye exam at eyecarecenter evaluates your overall vision and eye health, but if you're considering contact lenses, a specialized contact lens exam is necessary. This additional exam ensures your lenses provide clear vision, a proper fit, and all-day comfort.A contact lens exam includes specialized tests that go beyond a standard eye exam. These tests are quick, painless, and designed to assess your eye shape, tear production, and overall lens compatibility. Here's what to expect during your visit to eyecarecenter:Measuring the Curvature of Your Cornea: Using a keratometer, your doctor will assess the shape of your cornea to ensure the best lens fit. Measuring Your Pupils and Irises: These measurements help align the lenses correctly for optimal clarity and comfort. Evaluating Tear Film Quality: Your doctor will check for dry eye symptoms since poor tear production can cause contact lens discomfort. Examining Eye Health and Lens Fit: A magnification device allows your doctor to detect any underlying eye conditions and confirm that your contacts fit safely. To ensure the best fit and vision, you may need one or two follow-up visits. This trial period allows you to test different lens types to find the most comfortable and effective option for your needs. If adjustments are necessary, your optometrist will fine-tune your prescription or lens type to achieve the best results. At eyecarecenter, our priority is to help you find the best vision solution—whether that's contact lenses, glasses, or both. Your comfort, eye health, and clear vision are always our top priorities! Page published on Friday, August 14, 2020Page published on Friday, August 14, 2020You're probably aware that you should see an optometrist once a year to check the general health of your eyes as well as the quality of your vision. But did you know a routine comprehensive eye exam isn't enough if you plan to wear contact lenses? There is a difference between an eyeglasses exam and a contact lens exam. And understanding that difference will save you time and money.What is a comprehensive eye exam? During a comprehensive eye exam, your visual acuity will be tested using an eye chart. Several other tests will be performed to determine your eye health and whether prescription eyewear is required to correct your vision. A comprehensive or eyeglasses exam commonly involves three basic steps. First, your doctor will ask you about your medical history and any vision problems you've been experiencing. Next, your doctor (or his/her assistant) will assess the sharpness of your vision. Tests performed in a comprehensive eye exam may include:Visual field test to check for the presence of blind spots in your peripheral visionColor blindness testCover test to check eye alignmentOcular motility test to check eye movementStereopsis test to check depth perceptionRetinoscopy to obtain an approximation of your eyeglass prescriptionRefraction to determine your exact eyeglass prescriptionSlit lamp exam to examine the structures of your eye under magnificationGlaucoma testFinally, your doctor may administer drops to numb and/or dilate your eyes to measure your eye pressure and to examine the inside of your eye. If you require vision correction, the doctor will then provide a prescription so you can order corrective lenses. Why do I need a separate exam for contact lenses?If you plan to wear contact lenses, you'll need a separate eye exam because contact lenses are classified as medical devices. The good news is a contact lens exam can usually be performed at the same time as your comprehensive eye exam. If you plan to wear contact lenses, let your eye doctor know during your routine eye exam so you don't have to book separate appointments. What is a contact lens exam?During a contact lens exam, the optometrist will need to evaluate the size and shape of your eye to find a lens that fits your eye properly. The eye doctor may also check for any eye health issues that could affect contact lens comfort. Specifically, an eye exam for contacts will include: Cornea measurements so your doctor can determine the proper curve and size of your contact lenses. If your eye's surface is irregular because of astigmatism, you may need a toric contact lens (a lens shaped to offset distortions of your eye and provide sharper vision).Pupil and iris measurements so your doctor can choose contacts that fit well on your eyes.Tear film evaluation to determine if you have a severe dry eye condition. If so, your doctor may recommend special contact lenses for dry eyes.Once these tests are complete, your doctor will likely ask you to try on several different brands of contacts to determine which ones feel most comfortable. After finding contact lenses that fit properly, are comfortable, and provide proper vision, your eye doctor can write your contact lens prescription. This prescription will designate contact lens power, a base curve (a shape matching the curvature of your eye) and diameter. How much does a contact lens exam cost?It's also important to note that if you wear contact lenses, your annual eye exams typically will cost more than an exam for someone who doesn't wear contacts due to the additional tests included. How much more is entirely dependent upon the doctor you're seeing.Like eyeglasses prescriptions, most contact lens prescriptions expire one to two years after your eye exam/contact lens fitting and will therefore require annual follow-up exams. To schedule a contact lens exam, contact an eye doctor near you. Getting your eyes checked and buying prescription eyewear can ring up a hefty tab, especially if you lack vision insurance. That's why many consumers turn to Walmart Vision Centers for affordable eye care. But what are Walmart's current prices for vision services and products in 2025? A Breakdown of Eye Exam Costs at Walmart Vision Centers An annual eye health exam does more than check your vision prescription. It screens for glaucoma, cataracts, and other conditions that could impair sight. According to the American Optometric Association, a standard adult eye exam averages \$189 nationwide. How do Walmart's prices compare? Walmart Eye Exam Costs: Comprehensive Eye Exam: \$75-\$85 without insurance. With insurance, often \$0-\$30 depending on your plan's copay. Contact Lens Exam: \$95-\$115 without insurance. Checks fit and prescribes proper contacts. Eye Exam with Astigmatism Test: \$105-\$125 without insurance. Extra \$20-\$40 to check for astigmatism. Clearly, Walmart's standard eye exam costs about 60% less than national averages. For contact lens wearers like myself, Walmart's exam and fitting fees are typically 25-50% cheaper than private practice optometrists. Below is a comparison of average exam prices with and without insurance: Exam Type Walmart Price National Average Savings with Walmart Comprehensive Eye Exam \$75-\$85 \$189 Up to \$125 Contact Lens Exam \$95-\$115 \$225 Up to \$130 Glasses Frame and Lens Prices at Walmart Vision Centers Once you have your new prescription, it's time to pick out some stylish new frames and lenses. For glasses, you'll select frames and lenses separately. Here's what to expect: Eyeglass Frames Over 1,000 frames to choose from Metal and plastic frames for men, women, teens, and kids Brands like Foster Grant, Revlon, Black Flys, and Marvel Comics Frame prices range from: Basic frames: \$8-\$25 Designer brands: \$70-\$200 Lenses Standard plastic single vision lenses start around \$40 Polycarbonate lenses \$60-\$100 Progressive "no-line" bifocals \$135-\$200 Additional lens coatings/treatments \$20-\$70 With vision insurance, frames and lenses are typically covered fully or with a minimal copay like \$25. To compare, a typical pair of single vision prescription glasses outside Walmart averages \$237, according to the Vision Council. At Walmart, you can complete the pair for under \$100. That's a potential 60% savings versus private eye doctors or smaller optometry centers. Contact Lens Options and Pricing As a long-time disposable contact lens wearer, I've bought from many retailers. Walmart Vision competes well on name brands and their own affordable equivalents. Here's a pricing overview for Walmart contacts: Exam and contact lens fitting: \$95-\$115 Brand name lenses (Acuvue, Biofinity): \$15-\$45 for a 1-month supply Walmart brand (Equate) lenses: \$8-\$15 per month Specialty lenses for astigmatism/bifocals: \$55-\$115 per month At other retailers, I've paid \$20-\$50 more for the exact same contact lens brands and supplies. The exam and fitting fees were also \$30-\$50 higher. Buying contacts with vision insurance helps significantly lower costs. You'll typically pay a \$15-\$40 copay for the exam plus reduced pricing on the contact lenses themselves. Leveraging Insurance and Savings at Walmart Walmart Vision Centers aim for affordability, accepting most major vision plans: VSP Eyemed Medicaid Medicare Davis Vision Many other providers Before your appointment, call ahead to confirm your insurance is accepted. Some money-saving tips: Ask what vision exam and materials copays your plan requires. Inquire about discounts or coupons for non-covered portions. Purchase contacts online using your prescription to maximize savings. Take advantage of Walmart's price match guarantee. Conclusion While Walmart Vision Center prices can vary based on your needs, they offer transparent pricing and significant savings versus many independent eye doctors. From eye exams to prescription contacts and designer frames, Walmart aims to make quality vision care affordable. Charles Scott Charles Scott is a dynamic professional whose academic and career achievements demonstrate a strong commitment to excellence in the retail and consumer service industry. Graduating with an MBA from New York University in 2013, Charles has built a diverse and impressive career portfolio. He has held significant roles as a manager, advisor, and marketer, showcasing his multifaceted skills and deep understanding of the industry. Beyond his direct professional engagements, Charles has made a notable mark as the head writer and founder of ExpertBeacon.com. This platform stands as a testament to his dedication to consumer empowerment and education. ExpertBeacon.com is a resource designed to assist consumers in addressing their persistent questions about products, services, and companies. Under Charles's leadership, the site provides in-depth, well-researched, and accurate information, all structured in easy-to-follow guides and articles. His work here not only highlights his expertise in the field but also his commitment to providing valuable, actionable information to the public. Charles's approach is centered on a keen understanding of consumer needs and market dynamics, making him a respected voice in the industry. His contributions through ExpertBeacon.com and his professional roles reflect a blend of strategic thinking, practical knowledge, and a genuine desire to enhance consumer experiences in the retail and consumer service sectors. Thinking about swapping your glasses for the flexibility of contact lenses? Our trusted eye care experts are here to help. With our comprehensive contact lens exams, we'll determine the level of vision correction you need, ensuring an easy transition from glasses to contacts. Take the first step towards unencumbered, clear vision. Schedule a contact lens exam today. What Is a Contact Lens Exam? A contact lens exam is a comprehensive vision assessment specifically designed to measure the dimensions of your eyes and determine the correct prescription for contact lenses. More than just a vision exam, our contact lens exams assess the overall health of your eyes to provide you with contact lenses that fit comfortably, correct your vision, and maintain eye health for years to come. What Does a Contact Lens Exam Consist of? A contact lens exam involves a series of specialized tests that extend beyond the scope of a standard eye exam. These evaluations ensure a proper fit and confirm that contact lenses are a suitable option for your vision correction. Here's what you can expect: Cornea measurements: The optometrist will assess the size and curvature of your cornea, the front surface of your eye. This measurement is critical to find the right fit for your contact lenses. Pupil and iris measurements: Both the size of your pupil and the diameter of your iris will be measured. Tear film evaluation: The optometrist will perform a tear film evaluation to ensure your eyes are not too dry for contact lenses. Contacts are made of different plastics, so this assessment helps the eye doctor choose the right material for you. A dye may be used, or a small strip of paper may be inserted under the lower eyelid for this test. Prescription determination: Contacts and glasses prescriptions can differ. The eye doctor will conduct a refraction test specifically for contact lenses to determine the prescription you need. Review of lifestyle and preferences: The eye doctor will discuss your lifestyle and vision correction needs to help determine the best type of contact lenses for you. For instance, if you lead an active lifestyle or work long hours on a computer, certain types of lenses might be more suitable. Patients who are trying contact lenses for the first time will have a follow-up appointment to ensure the lenses are working and fitting properly. First-time wearers can also schedule a training session to help them adjust to their new contact lenses. Contact Lens Exam vs. Regular Eye Exam While both a contact lens exam and a regular eye exam aim to assess and improve your vision, there are some key differences between the two. A regular eye exam is primarily concerned with your overall eye health and determining a prescription for glasses. It involves a series of tests to detect any eye diseases, visual acuity, and how well your eyes work together. This examination can identify conditions like glaucoma, macular degeneration, or cataracts. On the other hand, a contact lens exam is specifically tailored to those who want to wear or currently wear contact lenses. While this exam does include many elements of a regular eye exam, it also delves into additional assessments necessary for a proper contact lens fit, including a wider range of eye measurements and training for new wearers. How Often Do I Need to Get a Contact Lens Exam? Contact lens exams should be scheduled annually, or as recommended by your eye doctor. Regular exams are critical for ensuring your prescription is up-to-date and your eyes remain healthy while wearing contact lenses. Which Contact Lens Is Best? Choosing the perfect contact lens is all about addressing your individual needs and personal fit. Here are some key factors that help in determining the best brand for you: Base curve: This refers to the curvature of the contact lens. It should match the cornea's shape to ensure clear vision and a snug fit. Diameter: The diameter of the contact lens will depend on the shape and size of your eye, eyelids, and eye opening for a centered and comfortable fit. Material: Different types of contact lenses are made from a variety of materials, each offering unique benefits. Power: Each brand will differ in the amount of power for nearsightedness and farsightedness. Astigmatism design: Patients with astigmatism will need a toric contact lens to help reduce lens rotation during blinking and head movement. Surface treatments: Some contact lenses have treatments that help the lens stay moist longer, which may be beneficial for patients with dry eyes. How to Renew a Contact Lens Prescription Contact lens prescriptions expire in one to two years depending on state law. When the time comes, you can place orders directly with your local Pearle Vision EyeCare Center. We'll provide you with shipping, ordering, and reordering options for your contact lenses. Price will vary depending on the brand and quantity you order. Schedule Your Contact Lens Exam Today Choosing the right contact lenses isn't a "one-size-fits-all" situation. At Pearle Vision, we understand that each patient is unique, and we want to help you find the best fit. To see if contact lenses are a good fit for you, contact a Pearle Vision EyeCare Center today. Contact Lens Exam FAQs What does a contact lens exam involve? A contact lens exam is more than just a regular eye exam. The eye doctor will evaluate your vision, take precise measurements of the size and curvature of your eyes, and ensure your eyes aren't too dry for contacts. They will then determine the type and size of contact lenses that will provide the best fit and vision correction for your eyes. How long does a contact lens exam take? Generally, you can expect contact lens exams to take about an hour. This amount of time allows the eye care specialist to perform all necessary evaluations for a contact lens prescription. It also includes time for the optometrist to discuss the different types of contact lenses, how to care for them, and how to properly insert and remove them. What's the difference between a contact lens exam and a regular eye exam? While a regular eye exam focuses on assessing your overall eye health and determining your prescription for eyeglasses, a contact lens exam involves additional steps specific to the prescription and fit of contact lenses. The eye doctor will measure the curvature and diameter of your eye to ensure proper lens fit and evaluate your tear film to confirm that your eyes are lubricated enough for contact lens wear. How much does a contact lens exam cost? The cost of a contact lens exam can vary based on several factors, including your insurance plan, the type of contact lenses you require, and whether any follow-up appointments are necessary. It's important to remember that the exam involves a comprehensive evaluation of your eyes, precise measurements for contact lens fitting, and personalized instructions on proper contact lens use and care. Thus, it typically costs more than a regular eye exam. Always consult with your eye care provider to get an accurate estimate based on your specific needs. How long does it take to adjust to wearing contacts? The adjustment period for wearing contact lenses can depend on various factors, including the type of contact lenses and the individual's comfort levels. Typically, most people adjust to soft or disposable contact lenses within a few days. However, Rigid Gas Permeable (RGP) lenses, which are more rigid and provide sharper vision, might take around two weeks for the wearer to fully adjust. A contact lens exam is essentially when your optometrist assesses the performance of your contacts, your experience with you contacts and the physical fit of your contacts in order to give you an up to date prescription for contact lenses. What is Involved in a Contact Lens Exam? A contact lens exam can happen on its own, or as part of your routine comprehensive eye exam. Vision Check You will be asked to read letters from an eye chart to give your eye doctor an idea of how well your contacts are performing. Prescription Check Your eye doctor will measure your prescription for glasses, then convert the numbers into a prescription for contact lenses (if necessary, sometimes they are the same). Check of the Fit Your eye doctor will examine how the contact lens center themselves on your eyes, as well as how tight/loose they are in order to determine whether or not the fit is appropriate. Health Check Your eye doctor will want to examine the health of your eyes under a microscope to make sure that your contact lenses have not been causing damage to your eyes. This step can involve the application of a dye called fluorescein onto the surface of your eyes in order to help your doctor visualize and changes caused by the contact lenses. After all the verification and measurements have been taken, your eye doctor will use that information to prescribe you a brand of contact lenses, along with all the essential prescription parameters. Your doctor will also discuss with you the most appropriate contact lens cleaning solution based on the specifics of your case. What is a Contact Lens Fitting? A contact lens fitting is the process by which someone who is completely new to contact lenses is safely put into contacts lenses through the help of their optometrist and his/her support staff. A contact lens fitting has many different parts to it, and usually consists of several visits with your eye doctor. What is involved in a contact lens fitting? Education The first part of being fitted into contact lenses is learning a thing or two about them. Optometrists will usually talk to you about contacts lenses and what you can expect from them before he/she attempts to put you in them. Initial Insertion Typically, your optometrist will be the one to insert the lenses into your eyes for the very first time. Depending on your comfort level with things touching your eyes, this make require a few attempts. Contact Lens Exam Once the contact lenses have been inserted, your eye doctor will perform actions similar to the Contact Lens Exam process described above. They will assess your vision with the contacts and look at the fit of the contacts on your eyes. At this point, if something doesn't look right, your optometrist will adjust the parameters of the contact lenses and try again. A contact lens fitting is not always an exact science. Some trial and error is often necessary. Insertion/Removal Training Before you optometrist can let you go home with contact lenses, you have to be able to demonstrate that you can insert and remove contact lenses on your own. During a contact lens fitting, you will usually sit down with one of your optometrist's assistant and receive one-on-one training on inserting and removing contact lenses. Safety Training You should also be trained on certain rules of wearing contact lenses. Your optometrist's assistant will give you a list of do's and do not's of contact lens wear. All of the above typically happens on the same day, but that's not the end of the process. Follow Up Visits After trying your contact lenses out at home, school or work for a week or two, your optometrist will see you back to perform another contact lens exam to ensure that everything is going well with your contacts. If everything looks good at your follow up visit, you will be given your contact lens prescription. If something doesn't look or feel right, then you may be sent home with a different pair of trials and ask to come back for yet another follow up. Depending of the complexity of your case, 3 or more follow ups may be necessary. For simpler cases, 1 is usually enough. As you may have guessed, the cost of a contact lens exam is not free (i.e., it is not usually part of your regular eye exam). If you want a contact lens prescription at the end of the day, you will have to pay for a contact lens exam. How much a contact lens exam costs depends entirely on how much your optometrist decides to charge for it. In general you can expect to pay anywhere from \$40 - \$100 for a contact lens exam. Possibly more if you eye doctor is so inclined. How Much Does a Contact Lens Fitting Cost? A contact lens fitting is considerably more expensive than a simple contact exam because of how much more work is involved on the part of your optometrist. Depending on how complicated he/she thinks the process might take, a contact lens fitting may cost you anywhere from \$50 to \$300. How much did your contact lens exam cost? Please share you experience in the comments below.