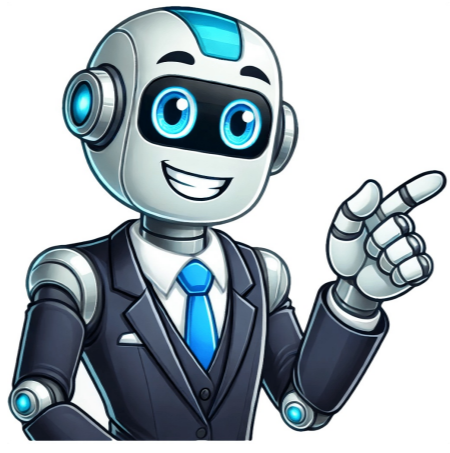


I'm not robot





Chord Electronics Product Communication | English Mojo 2 Manual - The Pumphouse, Farleigh Lane, East Farleigh, Kent, ME16 9NB. United Kingdom. +44 (0) 1622 721 444 info@chordelectronics.co.uk chordelectronics.co.uk V.1 More information on how to use the Mojo 2 here: Full manual: Mojo 2 can be utilized while constantly connected to power or on-the-go with its rechargeable batteries. A charger outputting at least 2A is recommended for optimal performance. Connect the provided Micro-USB charging cable, ensuring a secure connection to the device's charging input. Power source compatibility is crucial: verify your charger's specifications. Upon connecting Mojo 2 to power, the charge status LED will illuminate and display battery charge status through colour coding. If left constantly on charge, it will shift into intelligent desktop mode to prevent overcharging, indicated by a purple battery status light. The device's battery capacity range is displayed through the charge status LED, which flashes red for ten seconds after full depletion of batteries, signaling the need for recharging. Mojo 2 can be paired with digital devices via various inputs, including coaxial, USB-C, Micro-USB, and optical connections. If all four inputs are connected simultaneously, the device will automatically select the correct input based on music playback. Up to two pairs of headphones can be connected simultaneously, with the device's volume control adjusting both outputs equally, as there is no independent volume control for each headphone. Signal.Mojo 2 offers two levels of button brightness: normal and low. To switch between these modes, press the menu button once and then repeatedly press the '-' button until you reach your desired brightness setting. The selection will be remembered, and the device will automatically exit the menu settings in 10 seconds or immediately if you press and hold the menu button. The volume on Mojo 2 is adjustable, with two main ranges: low and high. The color of the menu button indicates the current volume range - white for high volume and unlit for low volume. As you adjust the volume, the menu button color changes accordingly. When both the volume buttons and menu button are unlit, the volume can be reduced to zero. When using Mojo 2 in high volume mode, it's essential to protect your hearing by setting the volume level to zero before starting playback. Be cautious when using the device with headphones connected, as excessive volume can cause damage. Mojo 2 features a cutting-edge UHD DSP control that provides advanced audio processing capabilities. The menu button allows you to access various settings and adjust them accordingly. The menu button's color changes depending on the selected option. Here's a guide: | Menu Color | Menu Mode | |---| | White | Bass 20 Hz and Treble 3 kHz shelf | | Green | Slow charging | | Red | Insufficient current to charge | Additionally, when Mojo 2 is turned off, the menu button displays a color indicating the charging current status. A white menu button indicates maximum capacity charging, while green signifies slow charging that can be improved with a different charger or cable. 1. Mojo 2 can be left connected to power at all times if desired, allowing full charge and automatic switch to Intelligent Desktop Mode. When fully charged, the device displays magenta to indicate charging completion and initiate this mode. To mute the device, press "+" and "-" simultaneously until the button starts pulsing; then release both buttons together again. The menu button will change colors when adjusting equalization settings or DSP modes, indicating which mode is currently selected. There are four main equalization modes: lower bass, mid-bass, lower treble, and high treble, each with 18 possible adjustments (9 positive lift and 9 negative cut steps). To access the equalization modes, press menu twice until it displays red; then cycle through to find the desired mode by pressing volume up or down buttons sequentially. The DSP feature can be used to flatten the response curve for a more neutral sound, but it's recommended to consult the frequency response curves of your headphones for optimal results. The Mojo 2 DSP has altered the sound of troughs, with four colors illustrating its tone controls. The bass and mid-bass have been boosted, while the low mid has been reduced, resulting in a changed frequency response. Graph 3 displays how instruments may be affected by adjustments to the DSP tone controls. It is not definitive but serves as a guide for experimentation. Mojo 2 offers three levels of crossfeed to enhance spatial effects for a more speaker-like soundstage when using headphones. To access this feature, press menu once and cycle through four options: red (minimum), green (moderate), blue (maximum), or unlit (off). The selection will be remembered and automatically exit the menu setting in approximately 10 seconds. Additionally, Mojo 2 features a button-lock option that disables all controls for travel use. To activate this feature, press the menu button six times until magenta is displayed, then simultaneously press both volume up '+' and volume down '-' buttons once. This will temporarily disable the power button while still allowing the auto power-shutdown feature to function. Mojo 2 also includes a factory reset mode that restores the device to its original settings. To reset the device, press both '+' and '-' simultaneously from either the DSP menu mode or the Crossfeed menu mode. Furthermore, Mojo 2 is compatible with Chord Electronics' Poly streamer/server, which adds wireless music streaming capabilities, network audio compatibility, and SD card library playback. Existing Poly owners can refer to the supplied manual for more information. To utilize Poly with Mojo 2, ensure that Poly is updated to version 3.0 firmware and above. For the most up-to-date specifications, visit [www.chordelectronics.co.uk](http://www.chordelectronics.co.uk). The device's dimensions are 83 mm x 62 mm x 22.9 mm, weighing approximately 270 grams when paired with Poly. Battery life is around 8 hours.