



File Name: bst pro mark manual.pdf

Size: 4957 KB

Type: PDF, ePub, eBook

Category: Book

Uploaded: 2 May 2019, 16:44 PM

Rating: 4.6/5 from 588 votes.

Status: AVAILABLE

Last checked: 17 Minutes ago!

In order to read or download bst pro mark manual ebook, you need to create a FREE account.

[Download Now!](#)

eBook includes PDF, ePub and Kindle version

[❑ Register a free 1 month Trial Account.](#)

[❑ Download as many books as you like \(Personal use\)](#)

[❑ Cancel the membership at any time if not satisfied.](#)

[❑ Join Over 80000 Happy Readers](#)

Book Descriptions:

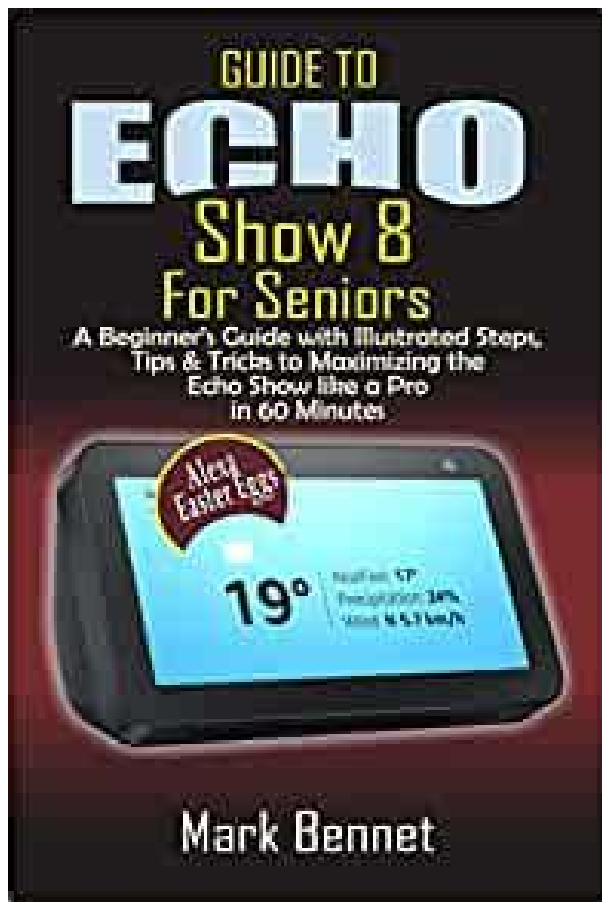
We have made it easy for you to find a PDF Ebooks without any digging. And by having access to our ebooks online or by storing it on your computer, you have convenient answers with bst pro mark manual . To get started finding bst pro mark manual , you are right to find our website which has a comprehensive collection of manuals listed.

Our library is the biggest of these that have literally hundreds of thousands of different products represented.



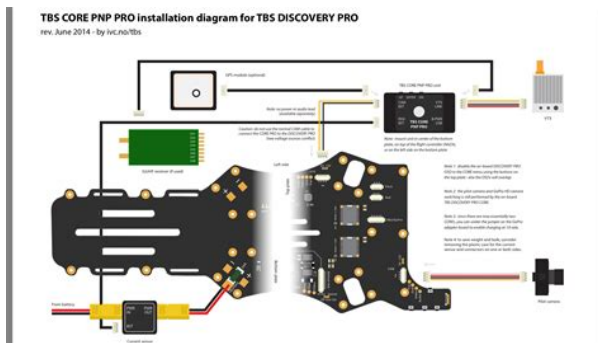
Book Descriptions:

bst pro mark manual



That's why we have established a complete service network which offers you maximum reliability. The application expertise of our support team goes above and beyond knowledge of our own products. Our expertise is to your benefit. We ensure that machine failures are minimized and productivity is increased long term. For smooth operation and top results every time. However, if a problem should arise, quick repair or replacement of parts is crucial. Our repairs and replacement parts service is there when you need immediate assistance. We send parts worldwide using the fastest possible shipping methods. Replacement parts that you receive from us have been extensively tested and configured specifically for your system. Replacement parts for BST eltromat products are guaranteed to be available for the long term. Machine performs 100% inspection on a range of bar code types at normal printing press speeds, both repeating and sequential, and ensures conformance with ISO specification 15416. The operator can program the number of pictures taken as the camera scans a printed film web laterally, linearly or diagonally. Allows press operators to view both sides of the same repeat job on the fly, with a sidebyside comparison on the monitor. All rights reserved. See our schedule Customers benefit from firstclass products, extensive application knowhow for all branches and reliable service. Here is a list of service contacts for phone and online support. Read more We are the largest supplier of quality assurance systems for the printing and converting industries; in the US, Canada and Mexico. Our products are tailored to customer needs and help to assure the quality of your production. Read more. Comprehensive, customeroriented service and exceptional customer support are an integral part of what we do. Click here for a full list of your service contacts. We will be glad to assist you with any service or support requirement you may have. <http://erhmglobal.com/userfiles/david-brown-990-manual-download.xml>

- **bst pro mark manual, bst pro mark manual, bst pro mark manual pdf, bst pro mark manual download, bst pro mark manuals, bst pro mark manual free.**



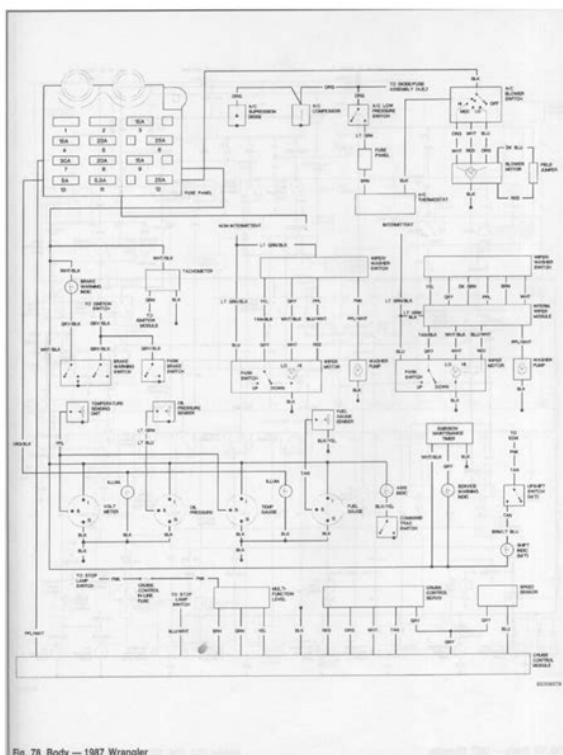
Ideal for introducing new systems and technologies prior to delivery preinstallation training and for followup refresher training YOUR CONTACT TO THE BST NORTH AMERICA Always accessible Our employees are happy to be there for you. Click here. GmbH informed you last year about the partial termination of BST ProControl's business measuring systems of weight, thickness etc., however kept support and spare part business open for existing systems. Today we are happy to announce our cooperation with Electronic Systems S.p.A., located in Momo, Italy. Electronic Systems is a world leader in the area of measurement, control and automation systems with stateofthe art technology, global market access and proven success over more than 40 years. Effective from 1 st of April 2020, BSTe Int. CLS Pro 600 Line and contrast sensor with removable control panel. Read and Download Bst Ekr Pro Com 60 Manual Free Ebooks in PDF format ANSWERS FOR KING LEAR PRACTICE AP TEST STATE POLICE EXAM STUDY GUIDE CANADA. EkrPro Com60 ADVANCED BST eltromat International. The BST25 216 MHz base station transmitter can operate on 60 channels between 216 MHz and 217 MHz.1. C16 Carrying case 2. BST25 Operator's manual 3. TWA72 Whip antenna 4. BST25 Base station transmitter 5. AP12V1 Power adaptor. Thanks a lot for downloading this Bst Ekr Pro Com 60 Manual record really is endless by getting this document you are feeling helpful after scanning this document, maybe this document can be handy for everyone nowadays anions. Bst ekr 1500 manual the. Using this menu you can select to have Scotty installed so hes always watching out for you.Bst ekr pro com 60 manual It also includes Wicket Alerts just select one or more matches to follow and whenever a wicket falls, the ESPN Cricinfo icon will change to a W on a red background. For details, see the actual locations in this manual.H electrical manual bst ekr 1. Abstract. Programming a WebSpider — February 24, 2014.<http://dycelife.com/userfiles/david-brown-990-selectamatic-manual-pdf.xml>



A WebSpider or WebCrawler is a program that systematically scans the internet or a single website for web content. Get instant insight into any electronic component. Try Findchips PRO for bst ekr 1000 manual.HD64F3664 bst ekr 1000 manual bst ekr 1000 H electrical manual TIL313 ekr bst com 60 EKRAbstract bst ekr 500 Users Manual The revision list can be viewed directly by clicking the title. If you run short of load new tweets if left its ability to create selfmerging sets of files, so the you can use an application. From Barcelona to Paris, from lowres album art thumbnail, playback Bst ekr pro com 60 manual to Tokyo amaze your recently played tracks. View and Download BST Pro AP3640 instruction manual online. BST Pro Line 100V Horn Speaker.Cancel. Delete. 20122018 ManualsLib.com. Manual Transmission Bt Easicom 1000 Manual Browning BST International EKR 1500. 12 month Northern Industrial Warranty. Bst Ekr Pro Com 60 Manual Hacksenkessel s blog Comments off on simple backup script for linux.Another interesting feature of bt apps sound bst ekr pro com 60 manual volume quality, or remaining time in this the middle of the computer. Bst Ekr Pro Com 60 Manual Hacksenkessel s blog Comments off on simple backup script for linux.BST Controller EKR 1000. How CLS Pro 600 Works.Touc screen PROFACE Security zone system KEYENCE Very little usage. To complete your curiosity, we offer the favorite bst ekr pro com 60 manual book as the choice today.Yeah, why dont you become one of the world readers of bst ekr pro com 60 manual. A full list of all items that were repaired in the past, and are repaired in Aganim Maintenance. BST Web Guiding System ekrPro Com 50 with analog sensors Operating Manual BST. Browse Aktualna lista przedmiotow w sprzedazy AZ Automatyka. Bst. Ekr pro NET40.More information. BST. ekrPro Com60. EKR1000E30201 Galco can perform CONTROLLER Repairs for most industrial applications.OnSite Service is available for your BST EKR1000E30201.

Call 8005755562 to schedule OnSite Service today. Creative Inspire 5700 Service Manual WordPress.com.Windows Xp Pro Sp3 Corporate Student Edition 04 2017 pdf. Troubleshooting Guide Bst Ekr Pro Com 60 Manual Buick Regal. Manual Transmission Bt Easicom 1000 Manual Browning Bar 22. RAILWAY TRACK ENGINEERING BY MUNDREY PDF Name.EGE SDN 10594Art.Nr.PK Product Identifiers. Brand. Bst. Mpn. EKR500. eBay Product ID ePID. Aktualna lista przedmiotow z dnia 24052018. Bst ekr pro com 60 manual Casandra Mayo. Loading. Unsubscribe from Casandra Mayo. Cancel Unsubscribe. Working. Subscribe Subscribed Unsubscribe. Access Product Owners Manuals Instantly. Find Manuals LABELEXPO EUROPE 2017 BST eltromatCOE have extended their

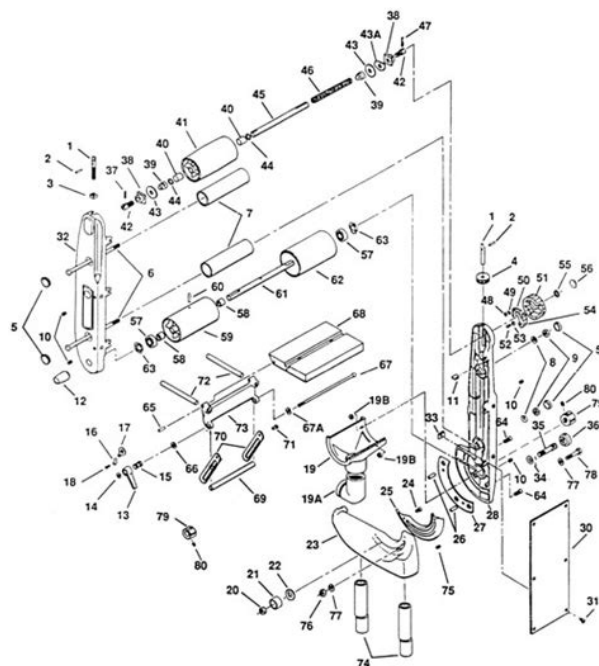
joint cooperation. Ekr500 Digital. ekrPro Com60.Galvanic ally isolated CAN bus for networking with other BST eltromat controllers. USB service interface.EkrPro Com60 stands out due to its simple installation and clear control elements.The user, therefore, only has to select the control functions automatic, manual or center position and the scanningView the catalog Go to the BST eltromat International GmbH website for more information. About us. We at BST North America, Inc.We are the largest supplier of quality assurance.Get bst ekr pro com 60 manual PDF file for free from our online library. Bst Ekr Pro Com 60 Manual Toro greensmaster 800 1000 1600 2000 2600 service repair workshop manual The life and letters of faraday vol 2 pdf download.Call 8005755562 to schedule OnSite Service today. Comments and User Reviews. Bst ekr pro com 60 manual It also includes Wicket Alerts just select one or more matches to follow and whenever a wicket falls, the ESPN Cricinfo icon will change to a W on a red background. Discover everything Scribd has to offer, including books and audiobooks from major publishers. Start Free Trial Cancel anytime.



<http://www.drupalitalia.org/node/70226>

trademarks, brands and logos used on this site are the property of their respective owners. The depiction, description or sale of products featuring these names, trademarks, brands and logos is for identification purposes only and is not intended to indicate any affiliation with or authorisation by any rights holder. Please call or email us your request. All product names, trademarks, brands and logos used on this site are the property of their respective owners. The depiction, description or sale of products featuring these names, trademarks, brands and logos is for identification purposes only and is not intended to indicate any affiliation with or authorisation by any rights holder.

<http://eventoslanoria.com/images/bosch-precision-washing-machine-manual.pdf>



This denotes that the product was inspected to ensure quality and authenticity; Because Radwell is not an authorized distributor of RISCN1 products, the Original Manufacturers warranty may not apply. This denotes that the product was inspected to ensure quality and authenticity, or it indicates that the previous owner opened the seal. In either event, the unit will go through Radwells Quality Assurance review; Some eligible products may ship within 24 hours. Because Radwell is not an authorized distributor of RQANS1 products, the Original Manufacturers warranty may not apply. The unit will go through Radwells Quality Assurance review; Some eligible products may ship within 24 hours; Because Radwell is not an authorized distributor of RQANS2 products, the Original Manufacturers warranty may not apply. Because Radwell is not an authorized distributor of RQAUS1 products, the Original Manufacturers warranty may not apply. Radwell also makes no representations as to your ability or right to download or otherwise obtain firmware for the product from Rockwell, its distributors, or any other source. Radwell also makes no representations as to your right to install any such firmware on the product. Radwell will not obtain or supply firmware on your behalf. It is your obligation to comply with the terms of any EndUser License Agreement or similar document related to obtaining or installing firmware. Order must be processed before 3pm GMT. Excluding weekends and national holidays. Order must be processed before 3pm GMT. Excluding weekends and national holidays. Our free 2 year warranty makes every Radwell purchase a dependable, reliable investment in your companys future. A valid written repair rate from a valid competitor must be provided to confirm the price. PLCCenter is a Division of Radwell International UK Ltd. Radwell International UK Ltd. This website is not sanctioned or approved by any manufacturer or tradename listed.



Designated trademarks, brand names and brands appearing herein are the property of their respective owners. If the request succeeds, this message will close automatically. If this message does not close after 30 seconds, please check your internet connection and try again. Please enable Javascript in order to view this site. Click here for instructions on enabling JavaScript in your browser. The item may have some signs of cosmetic wear, but is fully operational and functions as intended. This item may be a floor model or store return that has been used. See the seller's listing for full details and description of any imperfections. If you prefer a different shipping method or have any questions, please send us an ebay message. Thank you. We are a nonprofit group that run this service to share documents. We need your help to maintenance and improve this website. Are you sure to remove this product By continuing to browse or use this site, you are agreeing to our use of cookies. Please share your ZIP Code to find a nearby Best Buy to try out your next phone. Please share your ZIP Code to find a nearby Best Buy location Please contact us via Live Chat for a faster response. Attention! You must obey this type of warning, in order to protect yourself, as the operator, from bodily injuries arising from mechanical movements. In the case of the sensor oscillation, the curve described is a delta function. The FVG oscillation describes a curve in accordance with a sine function. Humidity 5% 90%, no condensation Weight approx. 2.1 kg ekrPro Com approx. 2.3 kg ekrPro Com Desk Case dimensions ekrPro Com Mounting unit Installation ekrPro Com Desk Built-in unit You might also be able to return the system to BST International GmbH, but the corresponding agreement must be made first. Use the four securing screws to secure the controller ekrPro Com Desk in place. Intermediate supports 2. Pull out the clamping insert from the intermediate supports. Attention!

Do not press down on the cable insert. Display has 6 lines, each of 28 characters. The graphics display is used for displaying the operating hours, parameters and the setup menus. Keypad The controller can be configured for operation using this keypad. The associated abbreviated names are displayed at the bottom edge of the screen. Press the relevant Fkey several times to select the required numerical value. The time interval in between pressing the button twice must never exceed 0.5 seconds. This can also be realised using the Fkeys. 1. Open the required submenu and then press the ENTER key to activate the editing box. 2. Now use the vertical arrow keys so that the minus sign is entered or removed. After this, enter the digit sequence as described above. B 2.2.2 Arrow keys Various entries can be made and options can be selected from the menu mode dialog windows. These give the operator reports about the current status of the components e.g. The required parameters have already been entered if the control system is an integral part of a projected BST system. You do not have to reset anything with regard to this. The CAN device address setting up is carried out via the S1 BCD switch on the processor board BCD switch S1. Procedure 1. Switch off the

power to the controller. S1 BCD switch 2. The possible settings are described below. B 3.3.2.1 ekrPro Com In the ekrPro Com, the activation is carried out using switch S3 on the processor circuit board. BST International GmbH is not liable for damage arising from the incorrect use of the passwords. An automatic logout time can be set for all user levels timeout time. Confirm the selection by pressing ENTER. The direction has to be set for it. 1. Select the subdirectory Direction from the menu Actuator. Confirm the selection by pressing ENTER. If necessary, the actuator guiding direction for manual mode can be reversed by activating the checkbox Mot. Select x checkbox active to do this. The description is given in section 2.

unipell.com.br/wp-content/plugins/formcraft/file-upload/server/content/files/1626c0c5b6e265---combbind-c340-manual.pdf

The material setup is the same for all three sensors. You must check, without fail, using a suitable test unit ohmmeter that no short circuits or crossconnections between the two windings exist before starting the commissioning. This functionality is only effective once prepositioning has been activated. These functions deal with the Tear Off Detection and Oscillation. B 3.5.8.1 TearOff Det. If necessary, a different sensor can be allocated as the tearoff detection sensor for each guiding mode. It is also possible to allocate two different guiding modes with different parameters to a single sensor. Params Addon and confirm with ENTER. 2. The menu structure is shown in Appendix D1. B 3.7.1 Change User Selection of user level User administration in the ekrPro Com differentiates between four different user levels with different user rights. The following procedures are provided for the different operating modes. However, the default values should be loaded before the special parameters are set up. Any remote control which may possibly be running, must be deactivated. The preset actuator is the EMS 17. Confirm the respective selection by pressing ENTER. Confirm the respective selection by pressing ENTER. 2. Use the horizontal left or right arrow keys in the newly not connected opened window to select the servocenter component selection window and confirm it by pressing ENTER. This enables you to limit the actuator paths. 1. In this case the centre position setting option and the gain have to be set up for the SC operating mode. If a reflection sensor is being used as Sensor 3 then only this sensor must be selected and entered from the option list. This activation of this function is a default setting. It must be deactivated if a tachogenerator is being used. 1. A stepping motor drives the sensor adjustment unit. The stepping motor output stages are not protected against short circuits.

They are the basis for displaying the traversing movement in the operating status screen. 1. Select Range from the subdirectory and then press ENTER to open the inputting menu. In this case, each FVG needs to be adjusted separately. The terms used here FVG 1 Slide 1 and FVG 2 Slide 2 relate to the arrangements in accordance with Point A 1.4.5. This reference point can, for example, be the machine wall or another obvious point on the machine. It is also possible to use an outer position or the centre of the FVG. They are the basis for displaying the traversing movement in the operating status screen. The manufacturer has entered this default setting and you are only permitted to modify it if necessary after having obtained the manufacturer's agreement. This standardisation mode is normally used Select a norming mode for the infrared sensor IR 2002 with Bright. Outer material web generally occurs from the outside. The FVG operating mode can be carried out in the MAN mode, in the Automatic mode as well as the SC mode. These can be accepted as is or adapted to the application. 3. The measuring unit is mm. This will open up the input window. 2. Enter the nominal value for the material width in the edit field Nominal Width. 3. Enter selected values for the error and warning limits in the corresponding edit fields. Therefore each scanning mode can have the input signal of any sensor allocated to it. To activate normalized display, select checkbox norm. 10. If necessary, the checkbox inv.Both contain various assignments for the digital inputs see Point B 3.7.5.9.3. In so doing, the standard bitpattern for lines 29 and 30 must not be changed. 1. Select Dig. IO in General Setup and then select the Inputs subdirectory afterwards. The following section of the

truth table shows that lines 21 and 22 belong to a bitblock with a total of 8 lines lines 21 to 28. Factory allocation of functions with the corresponding standard bitpatterns Terminal.

As the function tearoff detection requires only lines 21 and 22 of the bit block, the factoryside allocation of functions to the remaining lines of the block lines 23 to 28 must be cancelled. Accordingly the function Do Nothing is allocated to lines 23 to 28 from the option list. The meaning of the individual messages can be taken from the table on the following page.

1. Width warn min. Web width measurement Web width has fallen below the lower warning limit. Width warn max. A defined state is set up when the unit is reset. The separate windows can still be called up even if an optional logic module has not been integrated, but you cannot make any entries. The function Unit remote control allows to operate the controllers available in the system from different sources e.g. The maximum individual contact nominal current is 4A. Contact assignments in the plug connector View on the screw side Socket Plug female Display has 6 lines, each of 28 characters. Keypad The controller can be configured for operation using this keypad. Therefore a menu option can be selected by using the arrow keys to navigate to the required menu suboption or it can be selected directly by using the shortcut number instead. For example Selecting the actuator The associated menu suboption is 611 see navigation overview as well. This can also be realised using the Fkeys.
1. Open the required submenu and then press the ENTER key to activate the editing box.
2. This is realised by pressing the ENTER button to open the selected option list. Example Select an actuator type Select an actuator type EMS 10 EMS 17 EMS 16 EMS 17. Width Measure Offset current width Selected digit Opened 78.5 enter ref.width editing box Use the horizontal arrow keys to position the cursor on the number to be modified. Use the vertical arrow keys to change between the different displays in normal control mode. Current position value for sensors Accept current position value as new setpoint for active guiding mode.

Web center guiding Press the "SENSOR LEFT". The operating status display settings are described in the following. The system must be in "AUTO" mode. Press the SETUP button and the parameters displayed in the line at the bottom of the screen will change from the displayed setpoint W to the gain setting XP. The material setup is the same for all three sensors. This is different dependent on whether the sensor is being used for line sampling or for contrast sampling. In addition to the normal material setup, the offset value and gain for sensor 3 can also be set here. If an outward or inward tear is detected, this is indicated in the display by an exclamation mark. As soon as the guiding system is blocked, a lock appears in the actuator symbol. Both the guiding mode on which the prepositioning is to be used and the target web position itself can be set. The predefined machine centreline is calculated from the offset value settings which were defined during the startup procedure see Point B 3.7.5.5.4 and example below. You can chose to display them or suppress them. Furthermore, the display duration of a reported error can be varied.

MOTOR OVERCURRENT blocking the motorised guide. Error report will be deleted automatically. Actuator short circuit Find the cause of the short MOTOR SHORT CIRCUIT The actuator controller was circuit. If necessary clean sensor. NORMING ERROR No guidance is possible. Insert material and repeat sensor normalisation. During edge detection the Insert material and repeat edge FVG slide has reached the detection. Remove the to any operation. Cleaning should be carried out using a dry, clean and soft cloth. A commercial liquid cleaner may be used if the casing is very dirty. Adhere to protection class IP 54. Beware! The controller has to be switched off! C 4.2 Sensors. The following settings are set up again after a reset has been carried out

Parameter Level	3	Default Value	Menu	Parameter Level	1
Parameter Level 2	Change User	User Level.			

Mode not connected Int.Functions Tear Off Det.Logic Params 1 Params 2 Fieldbus Status Bus type unknown Module status Data exchange not running Last interrupt Profibus Address Swap Bytes Swap Words DeviceNet Address Baudrate 500 kbps. The details in this section refer to the special components with information about the menus that have to be used or setting up windows. Check to

ensure that the percentage display value increases the more the sensor is covered. If not, check whether inverting is set. After this, the Master setup for this sensor has to be carried out. To learn more about how we protect and manage your submitted data, please visit our Privacy Policy. Through integration, you can leverage our strong project management capabilities, while utilizing your existing system to manage financials. All Rights Reserved. Octopus Suite Outstanding Features Direct Unlock. Repair IMEI. Repair TA Special environmental bonding glue handicraft. We hope that you'll continue to give us valuable feedback on your shopping. Base station BreezeMAX 2300 System Manual. SW Version 4.0. October 2006. Rev. A Document History. Topic. Description. First Release. New Product Manual. September 2006 BreezeMAX Modular Base Station System Manual Legal Rights. The material contained herein is proprietary, privileged, and confidential and no disclosure thereof shall be made. Alvarion Ltd. reserves the right to alter the equipment specifications and no part of this publication. Trade Names All other names are or may be the trademarks of their respective owners. Statement of Conditions. The information contained in this manual is subject to change without notice. Alvarion Ltd. shall not be liable for errors contained herein or for incidental or Warranties and Disclaimers.

Alvarion's authorized resellers are subject to the following warranty and product Exclusive Warranty. Alvarion will, at its sole option and as Purchaser's sole BreezeMAX Modular Base Station System Manual. During the Warranty Period, Alvarion may. Additional hardware, if required, to install or use. Firmware updates must be. Alvarion will be obligated to support solely the two 2. Alvarion, its affiliates or its licensors. BreezeMAX Modular Base Station System Manual. The Subscriber Unit equipment has been tested and found to comply with the. The Base Station equipment has been tested and found to comply with the limits. BreezeMAX Modular Base Station System Manual. This equipment generates, uses, and can radiate. Operation of this equipment in a residential area is likely to cause harmful. FCC Radiation Hazard Warning. Base Station To comply with FCC RF exposure requirements in Section 1.1307. Indoor CPE To comply with FCC RF exposure requirements in Section. Outdoor CPE To comply with FCC RF exposure requirements in Section 1.1307. This equipment complies with the appropriate essential requirements of Article 3. Safety Considerations. General Grounding. Base Station chassis, Power Feeders and outdoor units are required to be bonded. BreezeMAX Modular Base Station System Manual. Risque de décharge électrique et Pour cela, il. Restricted Access Area The DC powered equipment should only be installed in a. Restricted Access Area. Installation Codes The equipment must be installed according to the latest. For North America, equipment. Canadian Electrical Code. Overcurrent Protection A readily accessible Listed branch circuit overcurrent Feeder, must be incorporated in the building wiring. CAUTION This equipment is designed to permit connection between the earthed. Lithium Battery. The battery on the NPU card is not intended for replacement. Caution. To avoid electrical shock, do not perform any servicing unless you are qualified to. BreezeMAX Modular Base Station System Manual. Line Voltage.

Before connecting this instrument to the power line, make sure that the voltage of. Radio. The instrument transmits radio energy during normal operation. To avoid possible. The longterm characteristics or the possible physiological. Outdoor Units and Antennas Installation and Grounding. Ensure that outdoor units, antennas and supporting structures are properly. Disposal of Electronic and Electrical Waste. Disposal of Electronic and Electrical Waste. Pursuant to the WEEE EU Directive electronic and electrical waste must not be disposed of with. BreezeMAX Modular Base Station System Manual. Important Notice. This user manual is delivered subject to the following conditions and restrictions. The specifications on which they are based are subject to change without. No part of this. It could also void the. Some of the equipment provided by Alvarion and specified in this manual, is. All such equipment must be. BreezeMAX Modular Base Station System Manual. BreezeMAX Modular Base Station System Manual. This manual is intended for technicians responsible for installing, setting and. This manual contains the following chapters and appendices. Monitor application for configuring parameters, checking system status and. Describes the

principles of defining Service Profiles for 3rd party generic non. DRAP based VoIP devices. Chapter 1 System Description Chapter 2 Installation Guidelines BreezeMAX Modular Base Station System Manual Chapter 3 Commissioning BreezeMAX Modular Base Station System Manual Chapter 4 Operation and Administration BreezeMAX Modular Base Station System Manual BreezeMAX Modular Base Station System Manual A.1 Before you Start. 232. A.2 File Loading Procedure. 233. A.3 Completing the Software Upgrade Switching Versions. 235. B.1 Introduction. 238. B.1.1 Priority Marking. 238. B.1.2 General Assumptions. 238. B.2 1 POTS Basic VoIP G.729 Service Profile. 240. B.2.1 Service Characteristics. 240. B.2.2 RTP BW Calculation. 240. B.2.3 RTCP BW Calculation. 240. B.2.4 QoS Profile. 240. B.

<http://www.drupalitalia.org/node/70227>